

User Manual

# Edging Assistant



© Rastislav Korytár, 2023  
[www.optimik.com](http://www.optimik.com)

## Introduction

The edging assistant is a complementary program to the Optimik program. It is installed on a tablet PC used directly in the workshop, where it will assist workers in edging flat parts. You can use it to minimise the error rate and increase the speed at this stage of production. At the same time, you get an overview of production (edging of parts) in real time thanks to Optimik.

The edging assistant is able to:

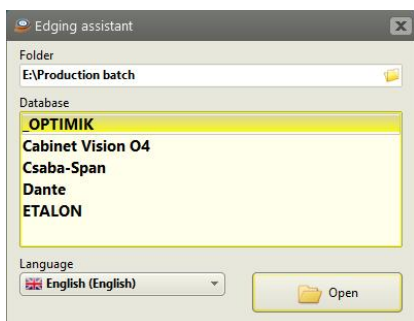
- display a list of flat parts that need to be edged (taped with edging strips or otherwise modify the part edges),
- quickly locate a part by scanning the barcode from its label (or by entering its identification number),
- graphically display the part, indicating the edges to be taped or otherwise machined ,
- mark and display the finished edges,
- send the production information (worker name, date, and time) to Optimik.

## Installing the program

The program has relatively low computer performance requirements and can be installed and used on a regular computer or tablet PC with Windows operating system (7-11) and a monitor with a resolution of at least 1600 x 1200 pixels.

To install the program, run the installation file downloaded from [www.optimik.sk](http://www.optimik.sk). After selecting the language and clicking the "Next" button, the License Agreement will be displayed. Please read it and if you agree, confirm the "I agree to the terms of the License Agreement" option and click the "Next" button. If necessary, you can change the installation folder (the program is installed to C:\RK Software\Edging Assistant by default) and click the "Next" button to start the installation. After copying the necessary files to the installation folder, click the "Finish" button to complete the installation process.

## Starting the program

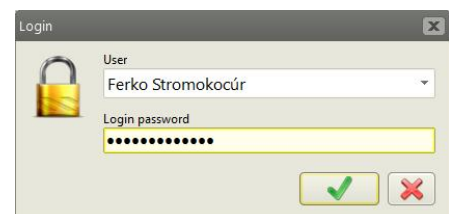


To start the program, click on the "Edging Assistant" icon on the desktop. An initial window will appear in which you can select the folder and the desired database (the \*.PRO file with the production data sent from Optimik). At the same time, you can also select the language of the program here.

*Note:* The working folder can be located on a local drive or USB flash drive, but it is recommended to use a shared (remote) drive or cloud storage (e.g. Google Drive, OneDrive, etc.). If an office computer with Optimik has access

to it, as well as tablet PCs in the workshop with Assistant\*, Optimik can receive production data sent from Assistant\* in real time.

Upon clicking the "Open" button, a login window appears where the worker logs into the program using their own password.




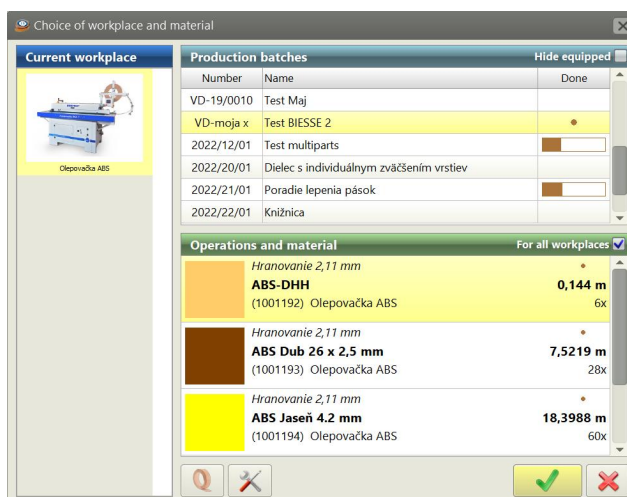
\* This is also how the Cutting Assistant works as well as other upcoming assistant programs. Further information can be found at [www.optimik.com](http://www.optimik.com).

## Main window

After logging into the program, the main window will display the production data that has been sent from Optimik. This lists all production batches that contain parts whose edges need to be taped or otherwise machined. Production batches that have already been fitted (all their parts have already been edged) can be automatically hidden in the table by confirming the "Hide fitted" option.

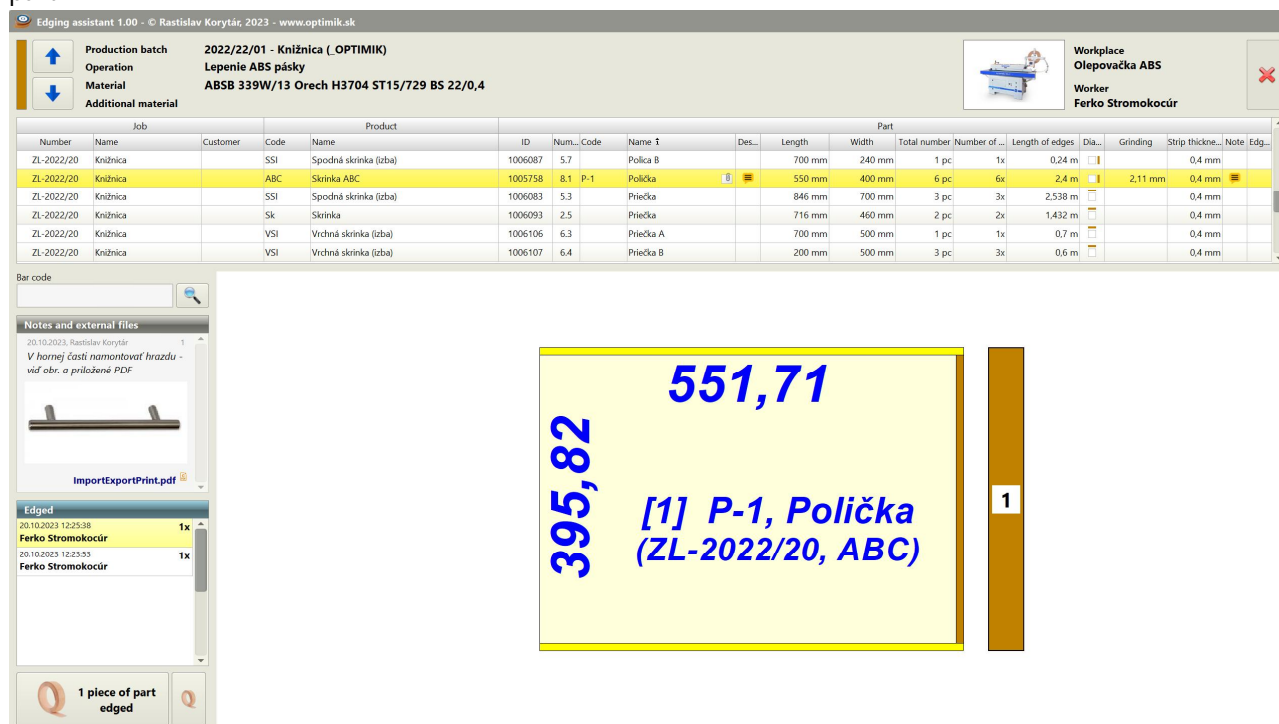
The parts are further sorted according to the operations and materials listed in the table below. It also shows the total number and length of edges as well as the production status using a graphic indicator (a full circle means that the selected operation has already been performed on all corresponding parts). The list of operations and materials is optionally dependent on the selected workplace (e.g. a specific edge banding machine), which can be selected in the panel on the left side of the window.

Once the workplace, production batch, operation, and material have been selected, display the work window by clicking  or double-clicking on the selected operation and material.




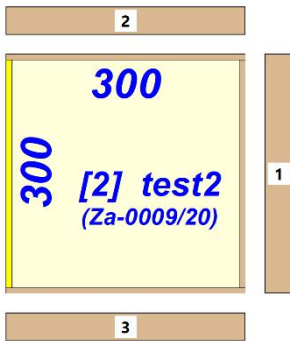
## Work window

The work window is displayed in the full screen mode. At the top, there is a panel with information about the selected production batch, operation, material, and workplace. Below that is a table with a list of parts to be edged (by the given operation and material). In the left panel there is a search field for entering or scanning a barcode (for automatic part retrieval) and tables with notes and production (edging) records for the current part.



## Working with the program

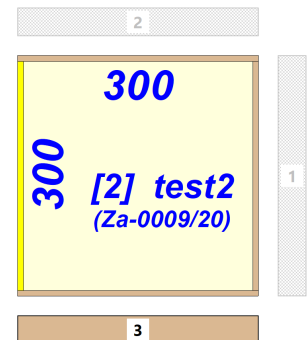
In the first step, select the desired part in the top table. You can also use the search function - either manually by entering the part number (or other data according to the program settings) and clicking the  button or automatically - by scanning the barcode with this data (from the label stuck on the flat part) into the search field.




At the bottom of the window, a schematic image of the selected part is displayed, including the marked edges that need to be edged (taped or machined in some other way, e.g. grinded in the case of glass, sheet metal, etc.). The edges corresponding to the current operation and material (listed at the top of the window) are indicated by elongated panels near the edge (side) of the part. They also list a number indicating the order in which the edge is to be modified.

After the first edge of the part has been completed, click on the panel with the number 1, which will subsequently be redrawn in grey.

Continue with the following edges in this way. When you click on the last edge (the panel with the highest number), the part will be considered to have been edged completely and a production record with date, time, and worker name will automatically be added to the table on the bottom left. This information is then also sent to Optimik.



In case you do not need to mark the edges in grey, you can speed up your work and click on the "1 part edged" button only after all the edges of the part have been completed.

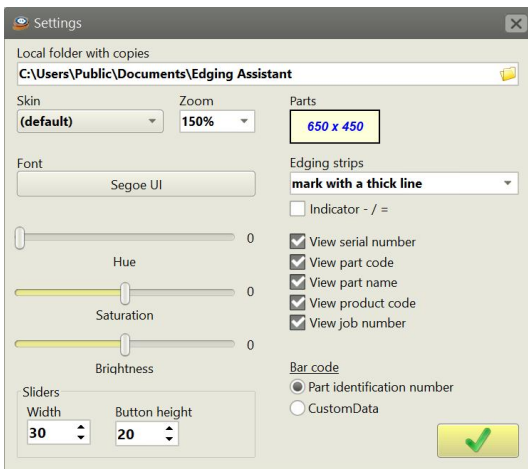
If the part has multiple pieces, you can speed up your work even more and click the  button to mark all the pieces of the given part as edged.

The last column of the top table shows the production status indicator of the given part:

- No part has been edged yet
- Half of the part has been edged
- All pieces of the part have been edged

## Program settings

When you click on the  button in the main window, a window will appear in which you can set:



Local folder with copies - in this folder the program stores all production information. This folder can be located anywhere on the disk, but it must not be a shared folder that contains the database itself.

Program appearance - according to your own preferences, you can customise the appearance of the program here by selecting one of the built-in skins, font type, and colour shade. You can also set the zoom (magnifying glass) in the range of 100 – 200 %, which you will certainly appreciate especially on smaller tablet PCs. It is also possible to adjust the size of sliders in tables and other lists.

Part image - here you can specify the colour of the part to be displayed in the program's work window, as well as the font and the range of data that will be displayed along with it.

Barcode - if you want to use the automatic part search function in the work window, here you can choose by what data this search is to be performed (or what type of data is in the barcode printed on the part labels). The choice is either the part identification number or the data in one of the ten user entries (CustomData).