

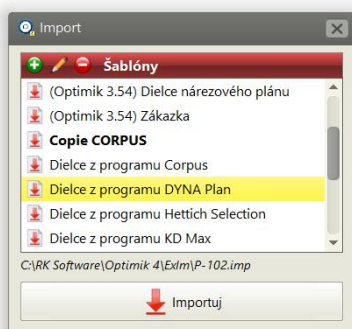
Data import and export

(Optimik 4.13 and higher)

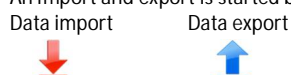
Optimik allows you to import/export data from/to a text file (*.csv, *.txt), in which the data of each record (e.g. part, stock item, etc.) are stated in a separate line and separated by a selected separator. To avoid possible duplication, when importing some types of records (e.g. products, business partners, stock items), it is checked whether the record with the given code already exists in the program. If so, it will not be imported and no modification of such a record will be made.

An import and export is performed using a selected template in which the data range, the separator, formatting and many other parameters are defined. The program comes with basic templates; if necessary, you can copy and edit them, or create your own new templates. The templates are saved in the folder ExIm, which is located in the installation folder of the program (by default, it is C:\RK Software\Optimik 4\ExIm). Files with templates have the extension *.imp (import templates) or *.exp (export templates) and their name takes the form X-NNN:

- X = the code indicating to which part of the program the template belongs (P = offers, Z = jobs, S = warehouse, A = business partners, D = documents, N = cutting plans)
- NNN = the template number (or the name – in the case of your own or modified templates).



An import and export is started by clicking on the buttons located on the top bar:



After clicking on the button, a list of available templates will be displayed (user templates are shown in bold). When selecting the desired template, you just have to click on the Import (Export) button, thereby starting the import (export) of data immediately.

In this window you can create, edit or delete the selected template. In addition, you can duplicate (make a copy of) the selected template by right-clicking and selecting the Duplicate function. When creating the template, the program will first prompt you to enter its name, and then a window will appear in which you can edit the template. You can set the following parameters here:

Default folder

This folder is automatically selected when you open a text file. The default folder is selected in the program settings, but you can also choose your own folder.

Extension

Text file extension

Data separator

Select the character that is used to separate data in your text file (e.g. a CSV file uses a semicolon)

File type

Here you can specify whether your text file contains data for one table (e.g. if you are importing stock items) or for multiple tables (e.g. if you are importing products and their parts at the same time). For data for multiple tables, you can also select here how the data are supposed to be distinguished:

- *By the value of the selected field*

Select this option if each row contains information about which table the data belongs to. E.g. if there is an "I" character in the first field of each row, the program will import the data from this row into the "Parts" table. You can then enter this condition at the bottom left of the window.

- *By a label*

Select this option if there is a separate row (label) in your text file that stores information about the table. E.g. Optimik 3 used the [-(!)-] label to import parts. The label can also be set in the bottom left part of the window.

Skip the introductory rows

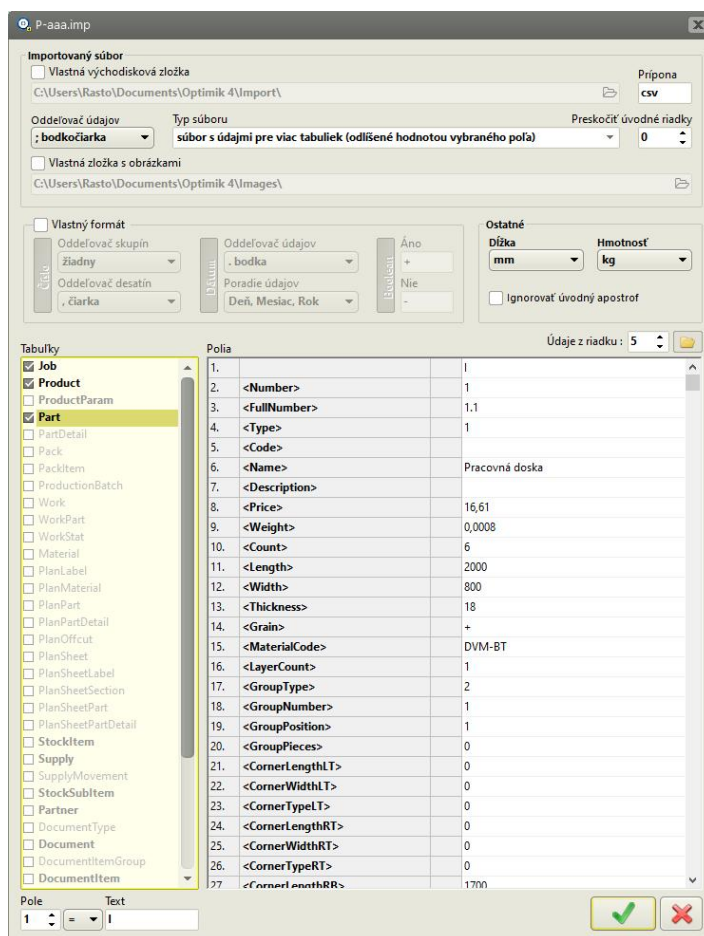
If there is any other data (such as information on the names of individual fields) at the beginning of your text file, you can skip these rows when importing. Just enter their number here.

Folder with images

Because a text file cannot contain images, only image file names (e.g. BoxXY.jpg) can be in the import file. If the complete path to the image is not specified in the text file, but only its name, the program will search for it in this folder. It is possible to use the default folder (selected in the program settings) or your own folder.

Data format

In this section it is possible to set the method of formatting numerical data, date data as well as logical (yes/no) data. If you do not specify custom formatting, the default formatting specified in the program settings will be used (the program is thus independent of the settings of your Windows operating system).



Other

In this section, select the units in which lengths and weights are stated in the text file. If necessary, the program performs an automatic conversion. At the same time, you can turn on a special option here that automatically truncates the apostrophe character if it is at the beginning of the text.

Tables

A list of all program tables into which data can be imported. You can select one or more tables here.

Fields

In this section, you can determine the range and order of data for the current table (the one you just selected in the left part of the window). The table contains 4 columns:

- **Position** – the serial number of the piece of data (field) in the row of the text file. If you open your text file in Excel, it will basically be a column number.
- **Data** - select here what data is in the given field (after clicking, a list of all data available for the given table will be displayed). The option not to import the field is also available here.
- **Fixed value** - by clicking in the given column you can mark (indicated by a small circle) that the given field is not supposed to be loaded from a text file, but the entered value is supposed to be imported into it. You can then enter this value in the fourth column of the table. You can use a fixed value e.g. to import a piece of data that is not in your text file (e.g. if you are importing parts and you want them all to have grain turned on. Select the "Grain" field and set the fixed value "+" for it)
- **Value** – when defining your template, it will be very helpful if you load here data from the selected row of your text file (by clicking on the button located to the right above this table).

The table also contains a context menu (which is opened by right-clicking) with which you can insert a new row in the table at a given position or delete the current row from the table. All subsequent lines are automatically renumbered after this operation.

Given that Optimik contains localizations into several languages, but the codes of tables and fields must be uniform, their English forms are used. You will find a list of them and a more detailed description at the end of this document.

The screenshot shows the 'Exportovaný súbor' dialog box. The 'Exportovať aj popisy položiek' checkbox is checked and highlighted with a red box. The 'Viacriadkové texty' checkbox is also checked and highlighted with a red box. Below the dialog, a table lists fields and their values:

1.	2.	3.	4.
<Number>	80		
<FullNumber>	3,80		
<Type>	1		
<Code>			
<Name>			
<Description>			
<Price>	8,84		
<Weight>	0		
<Count>	3		
<Length>	480		
<Width>	541		
<Thickness>	16		
<Grain>	+		
<MaterialCode>	A		
<LayerCount>	1		
<GroupType>	0		
<GroupNumber>	0		
<GroupPosition>	0		
<GroupPieces>	0		
<CornerLengthLT>	0		
<CornerWidthLT>	0		
<CornerTypeLT>	0		
<CornerLengthRT>	0		
<CornerWidthRT>	0		
<CornerTypeRT>	0		
<CornerLengthRR>	0		

The process of editing an export template is almost the same, there are only a few differences:

Export item descriptions as well

If you confirm this option, a row from the list of exported data (header) will be automatically inserted into the first row of the export file. If you export data from several tables at the same time, there will also be the corresponding number of these rows/headers (for each table separately).

Multiline texts

If you confirm this option, all multiline data (e.g. product description, etc.) will be converted to one line (row), with the data of the original lines separated by a space.

All in quotes

If you confirm this choice, all exported data will be enclosed in quotation marks.

Only current record

If you confirm this option, only the current record will be exported from the current table (set in the left part of the window). Otherwise, all will be exported. You can use this e.g. if you want to export only one (current) product but all its parts.

Printing and export to PDF

Print reports are created in the program using the built-in tool FastReport® (<http://www.fastreport.com>). You can use it to edit existing print reports or create new ones (similar to import and export templates).

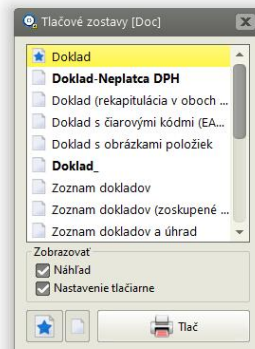
Files with print reports have the extension *.fr3 and are saved in the PrintSets folder, which is in the installation folder of the program (by default, it is C:\RK Software\Optimik 4\PrintSets). The name of each file has the form X-NNN.fr3:

- X = the code indicating to which part of the program the report belongs (e.g. "Off" indicates offers, "Job" jobs, "Doc" documents, etc.; this indication is also given in the title of the window with the selection of print reports)
- NNN = the print report number (or the name – in the case of your own or modified print reports).



After clicking on the "Print" button, a window with a list of print reports will open. If there is only one print report or one of the print reports is marked as main, its preview is displayed immediately. In this case, you can force the display of the list of print reports by clicking on the right side of the button (▼).

When selecting the print report and clicking on the "Print" button (or by pressing the Enter key or by double-clicking) a full screen window with a preview of the generated print report (if this option is enabled) appears. Buttons with the following functions are available in the top bar of the preview window:



	Starts printing. If the "Display printer settings" option is enabled, the standard printer settings window will be displayed before printing.
	Open / save a print report with data from/to a *.fp3 file. Using *.fp3 files, you can provide your print report to another Optimika user, who will load it from the file and display it with your data. This is an alternative to PDF files.
	Jump between pages in the case of a multi-page print report. You can also display the desired page by entering its number in the edit field (this must be confirmed by pressing the Enter key).
	Zoom in / out . You can also enter the desired display scale (size) directly into the edit field (third must be confirmed by pressing the Enter key).
	Automatic scaling for full page display
	Automatic scaling to display the full width of the page
Page previews	If you confirm this option, thumbnails will be displayed on the left side of the window.
	Export of the print report to a PDF file. A so-called virtual PDF printer is used for the export. If you do not have one installed on your system, choose one of the wide range of free and commercial solutions (e.g. https://www.bullzip.com). After installing the virtual printer, do not forget to select it in the program settings.
	Editing of the print report structure using the built-in FastReport® tool. Easier editing (such as changing the font, moving objects) can be handled even by less experienced users, but more advanced knowledge is needed for more complex edits (instructions can be found on the manufacturer's website - https://www.fast-report.com/en/product/fast-report-vcl-6).

Overview of tables and fields

The following list shows all tables and their fields that are available in the OPTIMIK program. However, some tables and fields can only be intended for export and printing and cannot be imported (eg calculated data, etc.) and some can only be imported. The field list is always automatically filtered when editing a template or print report (only the available fields are displayed).

Job	Offer / Job
ID	Internal identification number
JobGroup	Group name
Date	Creation date
Number	Number
Name	Name
Description	Description
Cost	Cost
Price	Price
Discount	Discount
Weight	Weight
Term	Date of execution
Order	Order
CustomerCode	Customer code
CustomerShortName	Abbreviated customer name
CustomerName	Customer name
CustomerAddress	Address (street, PO BOX)
CustomerPostalCode	Postcode
CustomerCity	City
CustomerState	State
CustomerNameAddress	Name and address of the customer
DeliveryName	Name for the delivery address
DeliveryAddress	Delivery address (street, PO BOX)
DeliveryPostalCode	Postcode
DeliveryCity	City
DeliveryState	State
DeliveryNameAddress	Customer name and delivery address
CustomerPerson	Contact person at the customer
CustomerTelephone	Customer phone number
CustomerEmail	Customer email address
CustomerWeb	Customer home page
CustomerBankAccount	Customer's bank account number
CustomerCompanyID	Customer ID
CustomerTaxID	Customer VAT number
CustomerVATID	Customer VAT ID
Profit	Gross profit (%)
Documented	Documentation status (invoiced, shipped, ...) %
Produced	Production status (%)
SellerShortName	Abbreviated seller name
Data1 – Data 30	30 custom data

JobItem	Quotation of an Offer/Job (for export and print only)
ID	Internal identification number
Type	Type: 0=operations, 1=material, 10=rounding/discount/surcharge, 100=other item
Name	Name
Description	Description
PriceExclVAT	Price excl. VAT
RateVAT	VAT
AbbrVAT	VAT designation (abbreviation)
PriceInclVAT	Price incl. VAT
SellerDiscount	Seller discount
SellerPriceExclVAT	Seller price excl. VAT
SellerPriceInclVAT	Seller price incl. VAT

Product	Product in offer/job
ID	Internal identification number
Number	Serial number of the product in the offer/job
Code	Code
Name	Name
Description	Description
Count	Number of pieces
Price	Calculated product price
FixedPrice	Fixed product price
TotalPrice	Total price of all pieces of the product
Weight	Weight
TotalWeight	Total weight of all pieces of product
Image	Image (Name of file)
Set	Name of the set

Product Param	Parameters of the products in the offer/job (for export and print)
ID	Internal identification number
Code	Code
Name	Name
Value	Value
IsInput	Input parameter (Y/N)
IsComputed	Computed parameter (Y/N)
IsChecking	Checking parameter (Y/N)
CanPrint	Parameter can be printed (Y/N)

Part	Parts of products in the offer/job
ID	Internal identification number
Number	Serial number of the part in the product
FullNumber	Comprehensive serial number (including product serial number)
Type	Part type: 1 = flat part, 2 = longitudinal part, 3 = other part
Code	Code
Name	Name
Description	Description
Cost	Cost
Price	Price
Weight	Weight
Count	Number of pieces
CountFormula	Formula for calculating the number of pieces
Length	Length
LengthFormula	Formula for calculating length
Width	Width
WidthFormula	Formula for width calculation
Thickness	Thickness
Size	Part size (length x width)
CutLength	Cut length of the part (may differ from the final one if there are edging strips or additional machining)
CutWidth	Cut width of the part (may differ from the final one if there are edging strips or additional machining)
CutSize	Cut part size (length x width)
Grain	Part have grain by length (Y/N)
GrainDirection	Drawing direction - if the value is entered (X or Y), the drawing and in the direction of length (Grain) will also be switched on automatically. If there is Y, the part will rotate automatically. You can use this option when importing parts from CAD applications that also distinguish the direction of the drawing (X = along the length, Y = along the width).
Image	Image (Name of file)
OperationCode	Operation code (if not specified, the default operation will be used)
MaterialCode	Material code
MaterialName	Material name
MaterialThickness	Material thickness
MaterialWidth	Material width
LayerCount	Number of layers (flat parts)
GroupType	Part is merged with another part in the group due to: 1 = grain, 2 = usage
GroupNumber	Position (column) in group type 1 / or number in group type 2
GroupPosition	Position (row) in group type 1
GroupPieces	Merge the pieces of the part in group type 1: 0 = in the direction of the grain, 1 = across the grain
OtherOperationCode	Other flat/longitudinal operation (by the type of the part)
OtherMaterialCode	Material code for another operation
CornerLengthLT	The length of the chamfer of the upper left corner of the part
CornerWidthLT	Width of the chamfer of the upper left corner of the part
CornerTypeLT	Top left bevel type: 0 = cutout, 1 = arc cutout, 2 = straight cutout, 3 = arc cutout
CornerLengthRT	The length of the chamfer of the upper right corner of the part
CornerWidthRT	Width of the chamfer of the upper right corner of the part
CornerTypeRT	Top right bevel type: 0 = cutout, 1 = arc cutout, 2 = straight cutout, 3 = arc cutout
CornerLengthRB	Length of the chamfer of the lower right corner of the part
CornerWidthRB	Width of the lower right corner of the part
CornerTypeRB	Bevel type of lower right corner: 0 = cutout, 1 = arc cutout, 2 = straight cutout, 3 = arc cutout
CornerLengthLB	Length of chamfer of the lower left corner of the part
CornerWidthLB	Width of the lower left corner of the part
CornerTypeLB	Lower left corner chamfer type: 0 = cutout, 1 = arc cutout, 2 = straight cutout, 3 = arc cutout
EdgeCodeT	Code edging tape on the upper edge
EdgeCodeR	Code edging tape on the right edge
EdgeCodeB	Code edging tape on the lower edge
EdgeCodeL	Code edging tape on the left edge
EdgeCodeLT	Border tape code on the upper left cut (if any)
EdgeCodeRT	Border tape code on the upper right cut (if any)
EdgeCodeRB	Border tape code on the lower right cut (if any)
EdgeCodeLB	Border tape code on the lower left cut (if any)
EdgeNameT	Name of the edging tape on the top edge
EdgeNameR	Name of the edging tape on the right edge
EdgeNameB	Name of the edging tape at the bottom edge
EdgeNameL	Name of the edging tape on the left edge
EdgeNameLT	Name of the edging tape on the upper left cut (if any)
EdgeNameRT	Name of the edging tape on the upper right cut (if any)
EdgeNameRB	Name of the edging tape on the lower right cut (if any)
EdgeNameLB	Name of the edging tape on the lower left cut (if any)
EdgeChangeDim	Whether to adjust the dimensions of the cut part by the thickness of the strips and grinding (Y/N)
Accessory1Code	Accessory code 1

Accessory1Quantity	Quantity of accessories 1
Accessory2Code	Accessory code 2
Accessory2Quantity	Quantity of accessories 2
CustomData1-10	10 custom data

PartDetail	Operations and materials in the part <i>(only for export and printing)</i>
ID	Internal identification number
Type	1100 = formatinf of the sheet material, 1150 = trimming corners, 1199 = any other surface operation 1200 = forming of bar material 1299 = other dimensional length operation 4000 = edge taping, 4099 = other operation with the edge, 9000 = other "lumpy" operation, 10000 = another operation
MaterialName	Material name
MaterialNameCount	If the operation consists in 1 Parts and repeated several times (eg. 2 of the hinge assembly), there will be a number of repetitions the Name of material (eg. "2 Hinge XY") or a pure Name of material (eg. "Hinge XY")
MaterialCode	Material code
MaterialColor	Material color (numerical color value)
MaterialWidth	Material width
MaterialThickness	Material thickness
OperationCode	Operation code
OperationName	Operation name
OperationCount	Repetition of the operation for 1 piece (eg in the case of edging tape there will be a number of edged edges)
OperationQuantity	The amount of operation per 1 piece (eg in the case of edging tape there will be its length)
TotalQuantity	The amount of operation for all pieces (eg in the case of edging tape there will be its length)
Value	Dimensions (in case of cutting sheet material or trimming corners) or quantity (for other types of operations)

Pack	Product package in order <i>(only for export and printing)</i>
ID	Internal identification number
Number	Serial number within the product
FullNumber	Comprehensive serial number (including serial number of the product in the order)
Type	1 = Package with flat parts, 2 = Package with longitudinal parts, 3 = Package with other parts, 4 = Package with accessories, 5 = Package with small accessories
Weight	Weight
PartCount	Number of parts in the package
SmallAccessory	Whether it is a package with small accessories (Y/N)

PackItem	Product package item in order <i>(for export and printing only)</i>
ID	Internal identification number
IsPart	Whether it is a part (+) or an accessory (-)
PartNumber	Serial number (if part)
Code	Part or material code (accessory)
Name	Name of part or material (accessory)
NameSize	Part name and dimension (or Material/Accessory name and part)
NameSizeCode	Part name, size and code (or Material/Accessory, Part name and Material code/Accessories)
Length	Part length
Width	Part width
Quantity	Number of pieces
Weight	Weight

PackAcc	Product package with accessory <i>(for export and printing only)</i>
Number	Number
ProductName	Product name
Name	Package name
Count	Count
Weight	Weight

PackAccItem	Item of product package with accessory <i>(for export and printing only)</i>
Name	Name
Quantity	Quantity
SubItems	List of subitems (for Kits)

ProductionBatch	Production batch <i>(only for export and printing)</i>
ID	Internal identification number
Date	Creation date
Number	Number
PartCount	Total number of pieces
Name	Name
ConnectedJobs	Jobs codes from which the parts in this production batch originate
Cost	Cost
Price	Price
Weight	Weight
Reserved	Reserved material in stock (in%)
Issued	Material released from stock (in%)
Produced	Production status (in%)

Work	Offer/Job/Production batch summary or cutting plan (for export and printing only)
ID	Internal identification number
Number	Offer/Job/Production batch number
Name	Name of the Offer/Job/production batch
Title	Number and Name of the customer
CustomerShortName	Abbreviated customer name
OperationType	1100 = forming of the sheet material, 1150 = trimming corners, 1199 = any other surface operation 1200 = forming of bar material 1299 = other dimensional length operation 4000 = edge taping , 4099 = other operation with the edge 9000 = other "lumpy" operation 10000 = another operation
OperationName	Name of the operation
OperationCode	Operation code
OperationDescription	Operation description
MeasureUnit	Unit of measure
Count	Number of operations
Quantity	Amount of operation
OperationUnitCost	Cost of 1 operation
OperationCost	Total cost of operation
OperationUnitPrice	Price of 1 operation
OperationPrice	Total cost of the operation
MaterialName	Material name
MaterialCode	Material code
MaterialColor	Material color (numerical value)
MaterialThickness	Thickness of material
MaterialWidth	Material width
MaterialGrain	The material has an oriented grain - in the direction of length (Y/N)
MaterialImageIndex	Internal material image number
MaterialDescription	Material description
Overconsumption	Overconsumption of material - including waste (%)
MaterialQuantityGross	Amount of material including waste (gross)
MaterialUnitCost	Unit cost of materials
MaterialUnitCostGross	Recalculated unit cost of material (for quantity including waste)
MaterialCost	Total material costs
MaterialUnitPrice	Unit price of material
MaterialUnitPriceGross	Recalculated unit price of the material (for quantity including waste)
MaterialPrice	Total price of the material
AdditionName	Name of supplementary material
AdditionCode	Supplementary material code
AdditionQuantity	Amount of supplementary material
AdditionUnitCost	Unit costs for supplementary material
AdditionCost	Total cost of supplementary material
AdditionUnitPrice	Unit price of supplementary material
AdditionPrice	Total price of additional material
Weight	Unit weight
TotalWeight	Total weight
AvgUnitCost	Average unit costs (per operation including main and ancillary materials)
TotalCost	Total costs
AvgUnitPrice	Average unit price (per operation including main and supplementary material)
TotalPrice	Total price
WorkTime	Estimated production time
IsPlan	Whether it is an panel/bar cutting plan (Y/N)

In the case of a cutting plan, the following data is also available:

SheetCount	Total number of boards / material formats used
SheetQuantity	Total area or length of material used
SheetWeight	Total weight of material used
SheetPrice	Total price of material from stock
StockSheetCount	Number of used sheets / formats of material from the warehouse
StockSheetQuantity	Area or length of material used from the warehouse
StockSheetWeight	Weight of used material from warehouse
ExtSheetCount	Number of used sheets / formats of material from the customer
ExtStockSheetQuantity	Area or length of material used by the customer
ExtStockSheetWeight	Weight of material used from the customer
PlanPartPrice	Recalculated price for 1 m2 / 1 m of part material in the cutting plan
OffcutCount	Total number of usable cuttings created
OffcutQuantity	Total area / length of usable offcuts
OffcutWeight	Total weight of usable offcuts
OffcutPrice	The total price of usable offcuts
OffcutReturnToStock	Whether the offcuts are returned to the warehouse (Y/N)
StockOffcutCount	Number of usable offcuts from material from the warehouse
StockOffcutQuantity	Area / length of usable offcuts from material from warehouse
StockOffcutWeight	Weight of usable offcuts from material from warehouse
ExtOffcutCount	Number of usable offcuts from material from the customer
ExtOffcutQuantity	Area / length of usable offcuts from the customer's material
ExtOffcutWeight	Weight of usable offcuts from the customer's material
WasteQuantity	Waste area / length
WasteWeight	Waste weight
WastePrice	Waste price
WasteReturnToStock	Is the waste returned to the warehouse (Y/N)
CutsCount	Total number of cuts
CutsLength	Total length of cuts
PriceCutsCount	Price for 1 cut
PriceCutsLength	Price for 1 m of cutting

PricePartsCount	Price for cutting 1 piece
PriceSheetsCount	Price for cutting of one sheet/format
Kerf	Kerf
Enlarge	Príspevok na orezanie dielov
Usage	Achieved material usage (%)

WorkPart	Parts in summary i (only for export and printing)
ID	Internal identification number
ProductionID	Serial number in the production batch
JobNumber	Number of Offer/Job
JobDate	Creation date of the Offer/Job
JobName	Name of the Offer/Job
CustomerShortName	Abbreviated customer name
Order	Order
ProductCode	Product code
ProductName	Product name
ProductCount	Number of pieces of the product
PartCode	Part code
PartName	Part name
PartDescription	Part description
PartSize	Part size (length x width)
PartCount	Number of pieces of the part in the product
PartNumber	Serial number of the part
TotalPartCount	Total number of pieces (for all pieces of product)
OperationCode	Operation code
OperationName	Name of the operation
OperationCount	Number of operations
OperationQuantity	Quantity of operations
MaterialName	Material name
MaterialCode	Material code
MaterialColor	Material color (numerical value)
MaterialThickness	Material thickness
MaterialWidth	Material width
MeasureUnit	Unit of measure
Dimensions	Dimensions
Weight	Weight
TotalCount	Total number of operations (in all pieces of part of all pieces of product)
TotalQuantity	Total amount of operation (in all pieces of part of all pieces of product)

WorkStat	Detailed breakdown of material and operations for summary (only for export and printing)
Type	Type: 0=cutting, 10=used sheet, 20=usable offcut, 30=scrap, 31=fillings
Description	Description
Quantity	Quantity
Price	Price
Total	Total price
Code	Code
Length	Length
Width	Width
Weight	Weight
StockLocation	Position in stock
OtherInfo	Other information (designation of stock)
UnitWeight	Unit weight
Supply	Current stock
AvailableSupply	Available stock (current stock reduced by reserved)

Material	Reserved / issued material of production batch / cutting plan (only for export and printing)
ID	Internal identification number
Type	Material type 1 = panel material, 2 = bar material, 3 = edging tape, 4 = other material
Code	Material code
Name	Material name
Description	Material description
BarCode	Barcode
Quantity	Quantity
MissingQuantity	Missing quantity (if there is insufficient available stock in the warehouse)
Unit	Unit of measure
IntegerQuantities	Whether only integer quantities are allowed - e.g. in case of piece items (Y/N)
Color	Material color (numerical value)
ImageIndex	Internal material image number
UnitWeight	Unit weight
Supply	Current stock
AvailableSupply	Current available stock
MinSupply	Minimum stock
MaxSupply	Maximum stock
StockPrice	Stock price
SalePrice	Required sale price
SalePriceInclVAT	Required sale price including VAT
Rounding	0-none, 1-fine, 2-standard, 3-strong
RateVAT	VAT
AbbrVAT	VAT designation (abbreviation)
TotalSalePriceExclVAT	Sales price (exc. VAT)
TotalSalePriceInclVAT	Sales price (incl. VAT)
ProducerShortName	Abbreviated name of the manufacturer
ProducerCode	Manufacturer code
ProducerItemCode	Material code at the manufacturer
Supplier1ShortName	Abbreviated Name of Supplier No.1
Supplier1Code	Supplier code no.1
Supplier1ItemCode	Supplier's material code no.1
Supplier 2 ShortName	Abbreviated Name of Supplier No.2
Supplier 2 Code	Supplier code no.2
Supplier 2 ItemCode	Material code at supplier no.2
Supplier 3 ShortName	Abbreviated Name of Supplier No.3
Supplier 3 Code	Supplier code no.3
Supplier 3 ItemCode	Material code at supplier no.3

PlanLabel	Cutting plan labels (for export and printing only)
Type	0-group, 1-group's part, 2-part, 3=offcut
Number	Serial number
NumberSize	"Size" serial number (common for different parts of the same size)
Name	Name of the offcut/group/part
CuttingLength	Cutting length
CuttingWidth	Cutting width
CuttingSize	Cutting dimensions (length x width)
Rotated	The part is rotated in the cutting plan
RotCuttingLength	Cutting length (it is interchanged with the width of the turned part)
RotCuttingWidth	Cutting width (in the case of a turned part it is interchanged with the length)
RotCuttingSize	Cutting dimensions (length x width) - for a rotated part, the dimensions are interchanged
EnlargeCutLength	Cutting length including trimming allowance (it is interchanged with the width of the turned part)
EnlargeCutWidth	Cutting width including trimming allowance (in the case of a turned part it is interchanged with the length)
EnlargeCutSize	Cutting dimensions including trimming allowance (length x width) - for a rotated part, the dimensions are interchanged
LabelCount	Number of labels
SheetsCount	Number of simultaneously cutted identical sheets (formats)
SheetNumber	Serial number of the sheet
SheetsNumbers	Serial number of the sheet in the form of e.g. 5-6 (if the numbering of each sheet is turned on and we have two identical boards here)
SheetCode	Sheet code (stock format)
SheetLocation	Position in warehouse (stock format)
SheetOtherInfo	Other info (stock format)
SheetLength	Sheet length
SheetWidth	Sheet width
SheetWeight	Sheet weight
JobNumber	Offer/Job number
JobDate	Creation date of the Offer/Job
JobName	Name of the Offer/Job
CustomerShortName	Abbreviated customer name
Order	Order
ProductCode	Product code
ProductName	Product name
ProductCount	Number of pieces of the product
PartNumber	Serial number of the part
PartCode	Part code
PartName	Part name
PartDescription	Part description
PartSize	Part dimensions (length x width)
PartCount	Number of pieces of the part in the product
FinalLength	Final part length (after strapping)
FinalWidth	Final width of the part (after strapping)
FinalSize	Final dimensions of the part (after strapping)
Grain	The part has a grain: 0-unspecified, 1-along the length, 2-along the width
ImageIndex	Internal part image number
PartID	Part identification number
PartCount	Number of pieces in 1 product
TotalPartCount	Total number of parts in the cutting plan
TotalGroupCount	Total number of groups in the cutting plan
TotalOffcutCount	Total number of usable offcuts in the cutting plan
TotalCount	Total number of parts/groups/usable offcuts in the cutting plan
PartPrice	Part price
PartWeight	Part weight
PartWeight	Part/Group/Offcut weight
Data1 -5	User data 1-5
Data A -E	User data A-E
EdgeT	Upper edging tape code
EdgeR	Right edging tape code
EdgeB	Lower edging tape code
EdgeL	Left edging tape code
EdgeName T	Name of the upper edging tape
EdgeNameR	Name of the right edging tape
EdgeNameB	Name of the lower edging tape
EdgeNameL	Name of the left edging tape
EdgeColor T	Top edging tape color (numeric value)
EdgeColorR	Right edging tape color (numeric value)
EdgeColorB	Bottom edging tape color (numeric value)
EdgeColorL	Left edging tape color (numeric value)
EdgeThick T	Thickness of the upper edging tape
EdgeThickR	Thickness of the right edging tape
EdgeThickB	Bottom edging tape thickness
EdgeThickL	Left edging tape thickness
CornEx LT	Whether the part has a chamfer in the upper left corner (Y/N)
CornEx RT	Whether the part has a chamfer in the upper right corner (Y/N)
CornEx RB	Whether the part has a bevel in the lower right corner (Y/N)
CornExLB	Whether the part has a chamfer in the lower left corner (Y/N)
EdgeLT	Border tape code on the upper left cut (if any)
EdgeRT	Border tape code on the upper right cut (if any)
EdgeRB	Border tape code on the lower right cut (if any)
EdgeLB	Border tape code on the lower left cut (if any)
EdgeNameLT	Name of the edging tape on the upper left cut (if any)

EdgeNameRT	Name of the edging tape on the upper right cut (if any)
EdgeNameRB	Name of the edging tape on the lower right cut (if any)
EdgeNameLB	Name of the edging tape on the lower left cut (if any)
Edge Color LT	Border tape color on the upper left cut (if any)
Edge Color RT	Border tape color on the upper right cut (if any)
Edge Color RB	Border tape color on the lower right cut (if any)
Edge Color LB	Border tape color on the lower left cut (if any)

PlanMaterial	Material sheets (formats) in the cutting plan (only for export and printing)
Length	Length
Width	Width
External	Whether it is material from the customer (+) or from the warehouse (-)
Count	Number of pieces
Code	Code (stock format)
Price	Price
Stock price	Stoc price
Weight	Weight
Defected	Material has defects (Y/N)
StockLocation	Position in stock
OtherInfo	Additional information (stock format)
Expiration	Expiration date (stock format)
Sheets	Serial numbers of individual pieces of the format in the cutting plan
Supply	Current stock
AvailableSupply	Available stock (current stock reduced by reserved)

PlanPart	Parts in the cutting plan (only for export and printing)
ID	Internal identification number
Number	Serial number of the part in the cutting plan
PartNumber	Serial number of the part in the offer / order
ImageIndex	Internal material image number
Code	Code
Name	Name
Count	Number of pieces in 1 product
TotalCount	Total number of pieces
CuttingLength	Cut length
CuttingWidth	Cut width
CuttingSize	Cut dimensions (length x width)
FinalLength	Final part length (after strapping)
FinalWidth	Final width of the part (after strapping)
FinalSize	Final dimensions of the part (after strapping)
Weight	Weight
JobNumber	Offer/Job number
JobDate	Creation date of the Offer/Job
JobName	Name of the Offer/Job
CustomerShortName	Abbreviated customer name
Order	Order
ProductCode	Product code
ProductName	Product name
ProductCount	Number of pieces of the product
Sheets	The numbers of the boards on which the individual pieces of this part are stored

PlanPartDetail	Operations and materials in the part in the cutting plan (only for export and printing)
ID	Internal identification number
MaterialName	Material name
MaterialCode	Material code
MaterialColor	Material color (numerical color value)
MaterialWidth	Material width
MaterialThickness	Thickness of material
OperationCode	Operation code
OperationName	Name of the operation
OperationCount	Repetition of the operation for 1 piece (eg in the case of edging tape there will be a number of edged edges)
OperationQuantity	The amount of operation per 1 piece (eg in the case of edging tape there will be its length)
Value	Dimensions (in case of cutting sheet material or trimming corners) or quantity (for other types of operations)

PlanEdgStrip	Edging strips on parts in the cutting plan (only for export and printing)
Code	Code
Name	Name
Count	Count
LengthGross	Length (excl. overconsumption)
Overconsumption	Overconsumption
Length	Length (incl. overconsumption)

PlanOffcut	Usable offcuts in cutting plan (only for export and print)
Number	Offcut number
Code	Code
External	Whether the offcut comes from the customer 's material (Y/N)
Length	Length
Width	Width
Size	Dimensions (length x width)
Count	Number of pieces
Sheets	The numbers of the boards from which the individual pieces of this offcut come
SheetStockLocation	Position of source material in the warehouse
SheetOtherInfo	Designation of source material in stock
SheetExpiration	Expiration date of the source material

PlanSheet	Sheets (formats) in the cutting plan (only for export and printing)
ID	Internal identification number
Number	Serial number
Count	Number of simultaneously cutted sheets
Length	Length
Width	Width
Dimensions	Dimensions (length x width)
Is2D	Y=Flat material, N=Bar material
External	Whether the sheet (format) comes from the customer (Y/N)
PartsCount	The number of pieces placed on the sheet
PartsQuantity	Area / length of parts placed on the sheet
Offcut Count	Number of offcuts on the sheet
Offcut Quantity	Area / length of cuttings placed on the sheet
WasteQuantity	Area / length of waste
ShredQuantity	- area / length of unusable shred
FillingsQuantity	- area / length of fillings
CutsCount	Number of cuts
CutsLength	Cutting length
Code	Code (stock format)
Defected	Whether the stock sheet is defective (Y/N)
StockLocation	Position in stock
StockOtherInfo	Other data (stock sheet)
Expiration	Expiration (stock sheet)
SectionLength	Max. section length
Usage	Usage (%)
CountQuantity	Count and area / length
Info	Sheet dimensions and Material Name
Statistics	Textual information on the amount of parts, offcuts, waste and cutting

PlanSheetSection	Sections of the current cutting plan sheet (only for export and printing)
ID	Internal identification number
Number	Number
LengthStart	The distance from the beginning of the section to the left edge of the sheet
LengthEnd	The distance of the end of the section from the left edge of the sheet

PlanSheetPart	Parts placed in the current section of the current cutting plan sheet (only for export and printing)
ID	Internal identification number
Number	Serial number of the part in the cutting plan
PartNumber	Serial number of the part in the offer/job
ImageIndex	Internal material image number
PartCode	Code
PartDescription	Description
Name	Name
Count	Number of pieces in 1 product
CuttingLength	Cut length
CuttingWidth	Cut width
FinalLength	Final part length (after strapping)
FinalWidth	Final width of the part (after strapping)
JobNumber	Offer/Job number
JobDate	Creation date of the Offer/Job
JobName	Name of the Offer/Job
CustomerShortName	Abbreviated customer name
Order	Order
ProductCode	Product code
ProductName	Product name
ProductCount	Number of pieces of the product

PlanSheet PartDetail	Operations and materials in the part located in the current section of the current cutting plan sheet (only for export and printing)
ID	Internal identification number
MaterialName	Material name
MaterialCode	Material code
MaterialColor	Material color (numerical color value)
MaterialWidth	Material width
MaterialThickness	Thickness of material
OperationCode	Operation code
OperationName	Name of the operation
OperationCount	Repetition of the operation for 1 piece (eg in the case of edging tape there will be a number of edged edges)
OperationQuantity	The amount of operation per 1 piece (eg in the case of edging tape there will be its length)
Value	Dimensions (in case of cutting sheet material or trimming corners) or quantity (for other types of operations)

StockItem	Stock items
ID	Internal identification number
Type	1 = panel material , 2 = bar material, 3 = edging tape, 4 = other material/goods, 5 = service, 6 = kit
Code	Code
Name	Name
Description	Description
BarCode	Barcode
Unit	Unit of measure
IntegerQuantities	Integer quantities only (Y/N)
Width	Width
Thickness	Thickness
Grain	The panel material has an oriented grain in the direction of length (Y/N)
Color	Color (numeric value)
ImageIndex	Internal image number
UnitWeight	Unit weight
TotalWeight	Total weight of current stock
Supply	Current stock
InitialSupply	Initial stock (import only)
InitialLength	Length of sheet / length material format with initial stock (import only)
InitialWidth	Width of sheet / length material format with initial stock (import only)
Reserved	Currently booked quantity
AvailableSupply	Available inventory (current inventory reduced by reserved)
MinSupply	Minimum stock
AvgSupply	Average stock
MaxSupply	Maximum stock
MinLackSupply	Missing quantity to reach minimum stock
AvgLackSupply	Missing quantity to reach average stock
MaxLackSupply	Missing quantity to reach maximum stock
StockPrice	Average stock price
TotalStockPrice	Total stock value (at current stock prices)
SalePrice	Required ales price
SalePriceInclVAT	The requested sales price includes VAT (Y/N)
Rounding	Rounding of sale price: 0-none, 1-fine, 2-standard, 3-strong
RateVAT	VAT
AbbrVAT	VAT designation (abbreviation)
TotalSalePriceExclVAT	Sales price (excl. VAT)
TotalSalePriceInclVAT	Sales price (incl. VAT)
CalculationPrice	Custom calculation price (for product price calculation)
CustomCalculationPrice	Use custom calculation price (otherwise it will be calculated according to the program settings)
Warning	Warning displayed when selecting a stock item
LastStockMovement	Date of the most recent receipt/issue/booking of the stock item
Canceled	Stock item is canceled (Y/N)
StockGroup	Stock group
Specification1	Specification No.1
Specification2	Specification No.2
Specification3	Specification No.3
TextureName	Texture (decor)
ProducerShortName	Abbreviated Name of the manufacturer
ProducerCode	Manufacturer code
ProducerItemCode	Material code at the manufacturer
Supplier1ShortName	Abbreviated Name of Supplier No.1
Supplier1Code	Supplier code no.1
Supplier1ItemCode	Supplier's material code no.1
Supplier 2 ShortName	Abbreviated Name of Supplier No.2
Supplier 2 Code	Supplier code no.2
Supplier 2 ItemCode	Material code at supplier no.2
Supplier 3 ShortName	Abbreviated Name of Supplier No.3
Supplier 3 Code	Supplier code no.3
Supplier 3 ItemCode	Material code at supplier no.3

StockSubItem	Stock item of kit
ID	Internal identification number
Quantity	Quantity in 1 kit
Consumables	Consumables (Y/N)
StockItemType	Type: 4 = Material, 5 = Service
StockItemCode	Code
StockItemName	Name
StockItemUnit	Unit of measure
StockItemStockPrice	Stock price
StockItemSalePrice	Selling price
StockItemUnitWeight	Unit weight

Supply	Inventory of stock item
--------	-------------------------

ID	Internal identification number
Code	Code
Length	Sheet length (panel/bar material)
Width	Sheet width (panel/bar material)
Size	Sheet dimensions (panel/bar material)
Use	The sheet can be used in the cutting plan (Y/N)
UnitWeight	Unit weight
TotalWeight	Total stock weight
Location	Position in the warehouse
Other	Another figure
Expiration	Inventory expiration
DescriptionFull	Identification Description (code, dimensions, other data, expiration, position in stock)
StockPrice	Stock price
TotalStockPrice	Stock value (at current stock price)
SalePrice	Sale price
CalculationPrice	Custom calculation price (for product price calculation)
CustomCalculationPrice	Use custom calculation price (otherwise it will be calculated according to the program settings)
InitialQuantity	Initial stock
InitialStockPrice	Initial stock price
Quantity	Current stock
AvailableQuantity	Available stock (current stock reduced by reserved amount)
LastStockMovement	Date of most recent receipt / issue / reservation of stock
StockItemCode	Stock item code
StockItemName	Name of the stock item
Specification	Specification

SupplyMovement	Inventory movements (for export and printing only)
ID	Internal identification number
DateTime	Date and time
Date	Date
Time	Time
Document	The document number
Description	Description
Quantity	Quantity
Received	Amount received
Reserved	Reserved quantity
Issued	Quantity issued
CurrentSupply	Current stock
Price	The price
StockPrice	Stock price

Partner	Business partners
ID	Internal identification number
Code	Code
ShortName	Abbreviated Name
Name	Name
Address	Address (street, POBOX, ...)
PostalCode	Postcode
City	City
State	State
NameAddress	Name and address for delivery address
Delivery Name	Name for delivery address
Delivery Address	Delivery address (street, POBOX, ...)
Delivery PostalCode	Postcode (shipping address)
Delivery City	City (shipping address)
Delivery State	State (shipping address)
Delivery NameAddress	Name and delivery address
Person	Contact person
Telephone	Telephone number
E-mail	E-mail adress
Web	Homepage
Contacts	Phone number, e-mail address and homepage (each entry on a separate row)
ContactsRow	Phone number, email address and homepage (all data in one row)
BankAccount	Bank account number
CompanyID	Company ID
TaxID	Tax ID
VatID	VAT ID
FullIDs	Company ID, Tax ID and VAT ID (each data in a separate row)
FullIDsRow	Company ID, Tax ID and VAT ID (all data in one row)
PartnerGroup	Group
Specification1	Specification No.1
Specification2	Specification No.2
Specification3	Specification No.3
DaysDue	Number of invoice due dates
NoVAT	Documents without VAT (Y/N)
CustomVAT	Documents with custom VAT

DocumentType	Document types (for export and printing only)
ID	Internal identification number
Names	Type name - plural (eg Invoices, Receipts ...)
Name	Type name – singular (eg Invoice, Receipt ...)
Customer	Business partner name (eg Customer, Customer, Supplier ...)
Date	Name of the date of issue of the document (eg Date of issue, Issued on ...)
Date2	Name of the next date in the document (eg date of delivery of the goods, the offer is valid until ...)
Add1	Name of additional data No. 1 (e.g. Order)
Add2	Name of additional data No. 2 (e.g. Delivery method)
Sign1	Description of the person who issued the document (eg Created, Prepared ...)
Sign2	Description of the person who took over the document (eg Accepted, Approved ...)
Footer	One-line text at the bottom of each document (e.g. Thank you for your order)
PaymentType	0 = document is not paid, 1 = payment is our income, 2 = payment is our expense
PaymentAdd1	Name of supplementary data no. 1 for payment (e.g. Constant symbol)
PaymentAdd2	Name of supplementary data no. 2 for payment (e.g. Payment method)
Color	Identification color (numerical value)
TextTotal	Name of the final amount (eg Amount to be paid, Total price ...)

Document	Document
ID	Internal identification number
Type	Type name (eg Invoice, Receipt)
Number	Number
Currency	Currency
ExchangeRate	Exchange Rate
ConnectedDocument	Linked documents
Date1	Date of creation
Date2	Another date
Description	Description
Add1	Additional information No.1
Add2	Additional information No.2
AccountCode	Internal bank account code
Bank	Bank
BankAccount	Account number
BankAddress	Bank address
BankID1	Additional data No. 1 to the bank account (eg SWIFT)
BankID2	Additional data No. 2 to the bank account (eg SWIFT)
VariableSymbol	Variable symbol for payment
PaymentAdd1	Additional information no. 1 for payment
PaymentAdd2	Additional information no. 2 for payment
DueDate	Due date
Text1	Text No.1 (before the table with the list of items)
Text2	Text No.2 (after the table with the list of items)
CustomerCode	Customer code
CustomerShortName	Abbreviated customer name
CustomerName	Name of the customer
CustomerAddress	Address (street, PO BOX)
CustomerPostalCode	Postcode
CustomerCity	City
CustomerState	State
CustomerNameAddress	Name and address of the customer
DeliveryName	Name for the delivery address
DeliveryAddress	Delivery address (street, PO BOX)
DeliveryPostalCode	Postcode
DeliveryCity	City
DeliveryState	State
DeliveryNameAddress	Name / customer name and delivery address of the customer
CustomerPerson	Contact person at the customer
CustomerTelephone	Customer phone number
CustomerEmail	Customer email address
CustomerWeb	Customer home page
CustomerBankAccount	Customer's bank account number
CustomerCompanyID	Customer Company ID
CustomerTaxID	Customer Tax ID
CustomerVATID	Customer VAT ID
MyCompanyID	Our Company ID
MyTaxID	Our Tax ID
MyVATID	Our VAT ID
TotalExclVAT	Total price (excl.VAT)
TotalVAT	Total VAT
DueAmount	Total amount to be paid
PaidExclVAT	Amount paid (excl. VAT)
PaidVAT	Paid VAT
TextPage	Page (translated into the language of the document)
TextAdd1	Supplementary information No.1 (translated into the language of the document)
TextAdd2	Supplementary information No.2 (translated into the language of the document)
TextPaymentAdd1	Additional information No.1 for payment (translated into the language of the document)
TextPaymentAdd2	Additional information No.1 for payment (translated into the language of the document)

TextBankAccount	Bank account (translated into the language of the document)
TextBank	Bank (translated into the language of the document)
TextVariableSymbol	Variable symbol (translated into the language of the document)
TextCustomer	Customer (translated into the language of the document)
TextDate	Date of issue (translated into the language of the document)
TextDate2	Another date (translated into the language of the document)
TextDueDate	Due date (translated into the language of the document)
TextCode	Code (translated into the language of the document)
TextName	Name (translated into the language of the document)
TextPriceExclVAT	Price excl. VAT (translated into the language of the document)
TextQuantity	Quantity (translated into the language of the document)
TextVAT	VAT (translated into the language of the document)
TextDiscount	Discount (translated into the language of the document)
TextTotalExclVAT	Total excl. VAT (translated into the language of the document)
TextSign1	Prepared (translated into the language of the document)
TextSign2	Taken over (translated into the language of the document)
TextSummary	Recapitulation (translated into the language of the document)
TextExclVAT	Excluding VAT (translated into the language of the document)
TextTotal	Total (translated into the language of the document)
TextDueAmount	Amount to be paid / Total price (translated into the language of the document)
Footer	Footer (translated into the language of the document)
UserName	The name of the user who created the document
UserContact	Contact details of the user who created the document
Profit	Profit of document
RemainAmount	Remaining amount to be paid
RemainDays	Remaining number of days until due date
ExDiscount	Whether there is at least one item with a discount (Y/N) in the document
ExVAT	Whether there is at least one item with VAT in the document (Y/N)
ExSurcharge	Whether there is at least one item in the document with a surcharge (Y/N)
PrintSummary	Whether to print the VAT summary (Y/N)
Specification1	Specification No.1
Specification2	Specification No.2
Specification3	Specification No.3
BrokerShortName	Abbreviated broker name
BrokerCode	Broker code
PriceList	Price list
TotalWeight	Total weight of items in the document

DocumentItemGroup	Groups of items in the document (for export and printing only)
ID	Internal identification number
Number	Number
Name	Name

DocumentItem	Item in the document
ID	Internal identification number
Number	Number
Group	Group
Type	0 = item, 1 = item with subitems, 2 = subitem, 3 = last subitem
ImageIndex	Internal image number
StockItemCode	Stock item code
StockItemName	Name of the stock item
StockBarCode	Barcode
SupplyID	Internal inventory identification number
SupplyCode	Inventory code
SupplyLength	Length (in case of panel/bar materials)
SupplyWidth	Width (in case of panel/bar materials)
SupplyOther	Other stock information
SupplyExpiration	Inventory expiration date
SupplyLocation	Location of stock in the warehouse
SupplyUnitWeight	Unit stock weight
Code	Code
Name	Name
Description	Description
PriceCurr	Price
PriceCurrInclVAT	Price includes VAT (Y/N)
RateVAT	VAT
AbbrVAT	VAT designation (abbreviation)
PriceExclVAT	Price excl. VAT
PriceInclVAT	Price incl. VAT
Discount	Discount / surcharge (%)
DiscPriceExclVAT	Discounted price excl. VAT
DiscPriceInclVAT	Discounted price incl. VAT
Quantity	Quantity
Unit	Unit of measure
TotalExclVAT	Total price excl. VAT
TotalVAT	The amount of VAT
TotalInclVAT	Total price incl. VAT

DocumentSummary	Summary of the document
ID	Internal identification number
Type	1 = subtotal for individual VAT rates, 10 = total amount, 11 = advance received, 20 = amount to be paid, 30 = rounding
Name	Name <i>(translated into the language of the document)</i>
PriceExclVAT	Price excl. VAT
VAT	The amount of VAT
PriceInclVAT	Price incl. VAT
OurPriceExclVAT	Price excl. VAT in our currency
OurVAT	The amount of VAT in our currency
OurPriceInclVAT	Price incl. VAT in our currency
AdvancePayment	Whether it is an advance payment - type 11 (Y/N)

DocumentSettlement	Document payments <i>(for export and printing only)</i>
ID	Internal identification number
Date	Date
DocumentNumber	The document number
Description	Description
Paid	Amount incl. VAT

Documents	Summary of documents (grouped by currencies) <i>(for export and printing only)</i>
CurrName	Currency name
CurrSymbol	Currency symbol
TotalExclVAT	Total price excl. VAT
TotalVAT	Total VAT
DueAmount	Total amount paid
RemainAmount	Total remaining amount to be paid

CatGroup	Product groups in the catalog (for export and printing only)
ID	Internal identification number
Name	Name

CatProduct	Product in catalog (for export and printing only)
ID	Internal identification number
Number	Number
Code	Code
Name	Name
Description	Description
Price	Price
Weight	Weight
ImageIndex	Internal image number

CatProductParam	Product's parameters in the catalog (only for export and printing)
ID	Internal identification number
Code	Code
Name	Name
Value	Value
IsInput	Input parameter (Y/N)
IsComputed	Computed parameter (Y/N)
IsChecking	Checking parameter (Y/N)
CanPrint	Parameter can be printed (Y/N)

CatPart	Parts of the product in the catalog (only for export and printing)
ID	Internal identification number
Number	Number
Type	Part type: 1 = flat part, 2 = longitudinal part, 3 = other part
Code	Code
Name	Name
Description	Description
Price	Price
Weight	Weight
Count	Number of pieces
CountFormula	Formula for calculating the number of pieces
Length	Length
LengthFormula	Formula for calculating length
Width	Width
WidthFormula	Formula for width calculation
Thickness	Thickness
Size	Part size (length x width)
CutLength	Cut length of the part (may differ from the final one if there are edging strips or additional machining)
CutWidth	Cut width of the part (may differ from the final one if there are edging strips or additional machining)
CutSize	Cut part size (length x width)
PartNull	The part does not have a specified size or number (Y/N)

CatPartDetail	Operations and materials in the product part in the catalog (only for export and printing)
ID	Internal identification number
MaterialName	Material name
MaterialNameCount	If the given operation is repeated more than once in 1 part (eg 2x hinge assembly), there will be a number of repetitions and the Material Name (eg "2x Hinge XY") otherwise only the Material Name itself (eg "Hinge XY")
MaterialCode	Material code
MaterialColor	Material color (numerical color value)
MaterialWidth	Material width
MaterialThickness	Thickness of material
OperationCode	Operation code
OperationName	Name of the operation
OperationCount	Repetition of the operation for 1 piece (eg in the case of edging tape there will be a number of edged edges)
OperationQuantity	The amount of operation per 1 piece (eg in the case of edging tape there will be its length)
Value	Dimensions (in case of cutting sheet material or trimming corners) or quantity (for other types of operations)

Payment	Payments
ID	Internal identification number
AccountCode	Bank account or cash code
Prescription	This is a payment prescription only (Y/N)
Type	Payment type: -1 = expense, 1 = income
Taxable	Payment is taxable (Y/N)
VirtualPayment	Payment is only virtual (eg exchange rate difference)
Date	Date
DocumentNumber	The number of the linked document
Description	Description
Currency	Currency
ExchangeRate	Exchange rate
CustomerCode	Business partner code
CustomerShortName	Abbreviated customer name
CurrencySum	Amount in foreign currency
SumExclVAT	Amount excl. VAT
SumVAT	The amount of VAT
SumInclVAT	Amount incl. VAT
IncomeExclVAT	Income excl. VAT
IncomeVAT	Income VAT
TaxableIncomeExclVAT	Income excl. VAT (taxable payment)
TaxableIncomeVAT	Income VAT (taxable payment)
TaxableIncomeInclVAT	Income incl. VAT (taxable payment)
NoTaxableIncomeExclVAT	Income excl. VAT (non-taxable payment)
No TaxableIncomeVAT	Income VAT (non-taxable payment)
No TaxableIncomeInclVAT	Income incl. VAT (non-taxable payment)
Expense ExclVAT	Expenditure excl. VAT
Expense VAT	Expenditure VAT
Taxable Expense ExclVAT	Expenditure excl. VAT (taxable payment)
Taxable Expense VAT	Expenditure VAT (taxable payment)
Taxable Expense InclVAT	Expenditure incl. VAT (taxable payment)
NoTaxableExpenseExclVAT	Expenditure excl. VAT (non-taxable payment)
No Taxable Expense VAT	Expenditure VAT (non-taxable payment)
NoTaxableExpenseInclVAT	Expenditure incl. VAT (non-taxable payment)
PaidDocumentNumber	The number of the document paid for by this payment
Specification1	Specification No.1
Specification2	Specification No.2
Specification3	Specification No.3

Payments	Summary of payments (grouped by bank account/cash) (for export and print)
ID	Internal identification number of bank account/cash
AccountCode	Bank account/cash code
AccountName	Bank account/cash name
InitialBalance	Initial balance
Incomes	Incomes
Expenses	Expenses
ClosingBalance	Closing balance

MyCompany	Information about your company (for export and print)
Name	Name
Address	Address (street, POBOX, ...)
PostalCode	Postcode
City	City
State	State
NameAddress	Name and address for delivery address (data in separate rows)
NameAddressRow	Name and address for delivery address (data in one row)
CompanyID	Company ID
TaxID	Tax ID
VatID	VAT ID
Full CompanyID	Company ID (including abbreviation)
Full TaxID	Tax ID (including abbreviation)
Full VatID	VAT ID (including abbreviation)
FullIDs	Company ID, Tax ID and VAT ID including abbreviations (data in separate rows)
FullIDsRow	Company ID, Tax ID and VAT ID including abbreviations (data in one row)
Telephone	Telephone number
E-mail	E-mail address
Web page	Homepage
Contacts	Phone number, e-mail address and homepage (each entry on a separate rows)
ContactsRow	Phone number, email address and homepage (all data in one row)
OtherData	Other data