

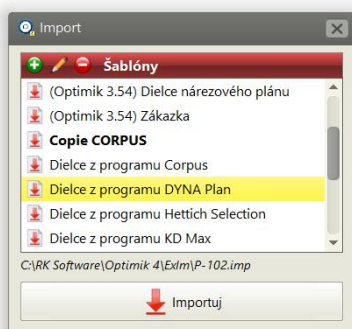
Data import and export

(Optimik 4.11 and higher)

Optimik allows you to import/export data from/to a text file (*.csv, *.txt), in which the data of each record (e.g. part, stock item, etc.) are stated in a separate line and separated by a selected separator. To avoid possible duplication, when importing some types of records (e.g. products, business partners, stock items), it is checked whether the record with the given code already exists in the program. If so, it will not be imported and no modification of such a record will be made.

An import and export is performed using a selected template in which the data range, the separator, formatting and many other parameters are defined. The program comes with basic templates; if necessary, you can copy and edit them, or create your own new templates. The templates are saved in the folder ExIm, which is located in the installation folder of the program (by default, it is C:\RK Software\Optimik 4\ExIm). Files with templates have the extension *.imp (import templates) or *.exp (export templates) and their name takes the form X-NNN:

- X = the code indicating to which part of the program the template belongs (P = offers, Z = jobs, S = warehouse, A = business partners, D = documents, N = cutting plans)
- NNN = the template number (or the name – in the case of your own or modified templates).



An import and export is started by clicking on the buttons located on the top bar:

Data import Data export



After clicking on the button, a list of available templates will be displayed (user templates are shown in bold). When selecting the desired template, you just have to click on the Import (Export) button, thereby starting the import (export) of data immediately.

In this window you can create, edit or delete the selected template. In addition, you can duplicate (make a copy of) the selected template by right-clicking and selecting the Duplicate function. When creating the template, the program will first prompt you to enter its name, and then a window will appear in which you can edit the template. You can set the following parameters here:

Default folder

This folder is automatically selected when you open a text file. The default folder is selected in the program settings, but you can also choose your own folder.

Extension

Text file extension

Data separator

Select the character that is used to separate data in your text file (e.g. a CSV file uses a semicolon)

File type

Here you can specify whether your text file contains data for one table (e.g. if you are importing stock items) or for multiple tables (e.g. if you are importing products and their parts at the same time). For data for multiple tables, you can also select here how the data are supposed to be distinguished:

- *By the value of the selected field*

Select this option if each row contains information about which table the data belongs to. E.g. if there is an "I" character in the first field of each row, the program will import the data from this row into the "Parts" table. You can then enter this condition at the bottom left of the window.

- *By a label*

Select this option if there is a separate row (label) in your text file that stores information about the table. E.g. Optimik 3 used the [~(!)-] label to import parts. The label can also be set in the bottom left part of the window.

Skip the introductory rows

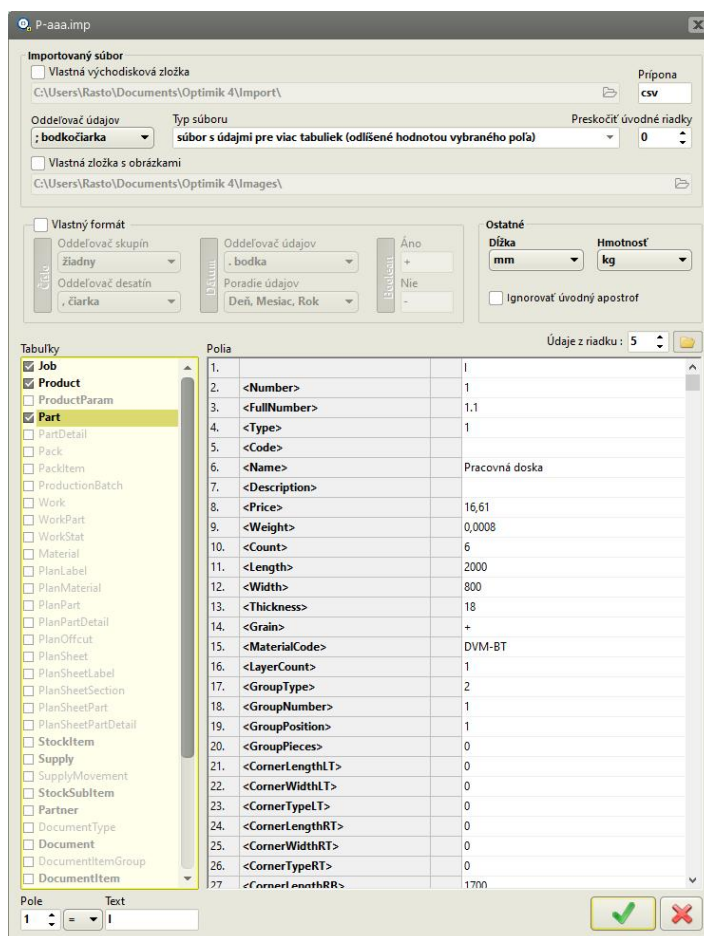
If there is any other data (such as information on the names of individual fields) at the beginning of your text file, you can skip these rows when importing. Just enter their number here.

Folder with images

Because a text file cannot contain images, only image file names (e.g. BoxXY.jpg) can be in the import file. If the complete path to the image is not specified in the text file, but only its name, the program will search for it in this folder. It is possible to use the default folder (selected in the program settings) or your own folder.

Data format

In this section it is possible to set the method of formatting numerical data, date data as well as logical (yes/no) data. If you do not specify custom formatting, the default formatting specified in the program settings will be used (the program is thus independent of the settings of your Windows operating system).



Other

In this section, select the units in which lengths and weights are stated in the text file. If necessary, the program performs an automatic conversion. At the same time, you can turn on a special option here that automatically truncates the apostrophe character if it is at the beginning of the text.

Tables

A list of all program tables into which data can be imported. You can select one or more tables here.

Fields

In this section, you can determine the range and order of data for the current table (the one you just selected in the left part of the window). The table contains 4 columns:

- **Position** – the serial number of the piece of data (field) in the row of the text file. If you open your text file in Excel, it will basically be a column number.
- **Data** - select here what data is in the given field (after clicking, a list of all data available for the given table will be displayed). The option not to import the field is also available here.
- **Fixed value** - by clicking in the given column you can mark (indicated by a small circle) that the given field is not supposed to be loaded from a text file, but the entered value is supposed to be imported into it. You can then enter this value in the fourth column of the table. You can use a fixed value e.g. to import a piece of data that is not in your text file (e.g. if you are importing parts and you want them all to have grain turned on. Select the "Grain" field and set the fixed value "+" for it)
- **Value** – when defining your template, it will be very helpful if you load here data from the selected row of your text file (by clicking on the button located to the right above this table).

The table also contains a context menu (which is opened by right-clicking) with which you can insert a new row in the table at a given position or delete the current row from the table. All subsequent lines are automatically renumbered after this operation.

Given that Optimik contains localizations into several languages, but the codes of tables and fields must be uniform, their English forms are used. You will find a list of them and a more detailed description at the end of this document.

The screenshot shows the 'Exportovaný súbor' dialog box. Key elements include:

- Exportovaný súbor:** File name 'Přípona', format 'csv', separator 'bodkočiarka', and 'Exportovať aj popisy položiek' checked.
- Vlastný formát:** Units 'Dĺžka: mm' and 'Hmotnosť: kg'. 'Viacriadkové texty' is checked, and 'Všetko v úvodzovkách' is unchecked.
- Tabuľky:** A list of tables with 'Part' selected.
- Polia:** A table with 27 columns. The first column is '1.', the second is the field name, and the third is a value. Fields include '<Number>', '<FullNumber>', '<Type>', '<Code>', '<Name>', '<Description>', '<Price>', '<Weight>', '<Count>', '<Length>', '<Width>', '<Thickness>', '<Grain>', '<MaterialCode>', '<LayerCount>', '<GroupType>', '<GroupNumber>', '<GroupPosition>', '<GroupPieces>', '<CornerLengthLT>', '<CornerWidthLT>', '<CornerTypeLT>', '<CornerLengthRT>', '<CornerWidthRT>', and '<CornerTypeRT>'.
- Bottom:** 'iba aktuálny záznam' checkbox is checked, and there are 'OK' and 'Cancel' buttons.

The process of editing an export template is almost the same, there are only a few differences:

Export item descriptions as well

If you confirm this option, a row from the list of exported data (header) will be automatically inserted into the first row of the export file. If you export data from several tables at the same time, there will also be the corresponding number of these rows/headers (for each table separately).

Multiline texts

If you confirm this option, all multiline data (e.g. product description, etc.) will be converted to one line (row), with the data of the original lines separated by a space.

All in quotes

If you confirm this choice, all exported data will be enclosed in quotation marks.

Only current record

If you confirm this option, only the current record will be exported from the current table (set in the left part of the window). Otherwise, all will be exported. You can use this e.g. if you want to export only one (current) product but all its parts.

Printing and export to PDF

Print reports are created in the program using the built-in tool FastReport® (<http://www.fastreport.com>). You can use it to edit existing print reports or create new ones (similar to import and export templates).

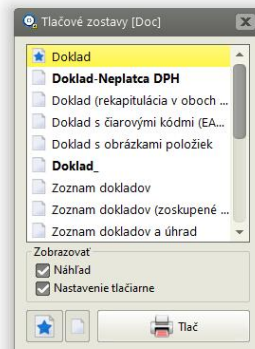
Files with print reports have the extension *.fr3 and are saved in the PrintSets folder, which is in the installation folder of the program (by default, it is C:\RK Software\Optimik 4\PrintSets). The name of each file has the form X-NNN.fr3:

- X = the code indicating to which part of the program the report belongs (e.g. "Off" indicates offers, "Job" jobs, "Doc" documents, etc.; this indication is also given in the title of the window with the selection of print reports)
- NNN = the print report number (or the name – in the case of your own or modified print reports).



After clicking on the "Print" button, a window with a list of print reports will open. If there is only one print report or one of the print reports is marked as main, its preview is displayed immediately. In this case, you can force the display of the list of print reports by clicking on the right side of the button (▼).

When selecting the print report and clicking on the "Print" button (or by pressing the Enter key or by double-clicking) a full screen window with a preview of the generated print report (if this option is enabled) appears. Buttons with the following functions are available in the top bar of the preview window:



| | |
|---------------|---|
| | Starts printing. If the "Display printer settings" option is enabled, the standard printer settings window will be displayed before printing. |
| | Open / save a print report with data from/to a *.fp3 file. Using *.fp3 files, you can provide your print report to another Optimika user, who will load it from the file and display it with your data. This is an alternative to PDF files. |
| | Jump between pages in the case of a multi-page print report. You can also display the desired page by entering its number in the edit field (this must be confirmed by pressing the Enter key). |
| | Zoom in / out . You can also enter the desired display scale (size) directly into the edit field (third must be confirmed by pressing the Enter key). |
| | Automatic scaling for full page display |
| | Automatic scaling to display the full width of the page |
| Page previews | If you confirm this option, thumbnails will be displayed on the left side of the window. |
| | Export of the print report to a PDF file. A so-called virtual PDF printer is used for the export. If you do not have one installed on your system, choose one of the wide range of free and commercial solutions (e.g. https://www.bullzip.com). After installing the virtual printer, do not forget to select it in the program settings. |
| | Editing of the print report structure using the built-in FastReport® tool. Easier editing (such as changing the font, moving objects) can be handled even by less experienced users, but more advanced knowledge is needed for more complex edits (instructions can be found on the manufacturer's website - https://www.fast-report.com/en/product/fast-report-vcl-6). If necessary, you can order a modification or creation of a new print report at https://www.koryktor.sk . |

Overview of tables and fields

The following list shows all tables and their fields that are available in the OPTIMIK program. However, some tables and fields can only be intended for export and printing and cannot be imported (eg calculated data, etc.) and some can only be imported. The field list is always automatically filtered when editing a template or print report (only the available fields are displayed).

| Job | Offer / Job |
|---------------------|---|
| ID | Internal identification number |
| JobGroup | Group name |
| Date | Creation date |
| Number | Number |
| Name | Name |
| Description | Description |
| Price | Price |
| Discount | Discount |
| Weight | Weight |
| Term | Date of execution |
| Order | Order |
| CustomerCode | Customer code |
| CustomerShortName | Abbreviated customer name |
| CustomerName | Customer name |
| CustomerAddress | Address (street, PO BOX) |
| CustomerPostalCode | Postcode |
| CustomerCity | City |
| CustomerState | State |
| CustomerNameAddress | Name and address of the customer |
| DeliveryName | Name for the delivery address |
| DeliveryAddress | Delivery address (street, PO BOX) |
| DeliveryPostalCode | Postcode |
| DeliveryCity | City |
| DeliveryState | State |
| DeliveryNameAddress | Customer name and delivery address |
| CustomerPerson | Contact person at the customer |
| CustomerTelephone | Customer phone number |
| CustomerEmail | Customer email address |
| CustomerWeb | Customer home page |
| CustomerBankAccount | Customer's bank account number |
| CustomerCompanyID | Customer ID |
| CustomerTaxID | Customer VAT number |
| CustomerVATID | Customer VAT ID |
| Profit | Gross profit (%) |
| Documented | Documentation status (invoiced, shipped, ...) % |
| Produced | Production status (%) |
| SellerShortName | Abbreviated seller name |
| Data1 – Data 30 | 30 custom data |

| JobItem | Quotation of an Offer/Job (for export and print only) |
|--------------------|--|
| ID | Internal identification number |
| Type | Type: 0=operations, 1=material, 10=rounding/discount/surcharge, 100=other item |
| Name | Name |
| Description | Description |
| PriceExclVAT | Price excl. VAT |
| RateVAT | VAT |
| AbbrVAT | VAT designation (abbreviation) |
| PriceInclVAT | Price incl. VAT |
| SellerDiscount | Seller discount |
| SellerPriceExclVAT | Seller price excl. VAT |
| SellerPriceInclVAT | Seller price incl. VAT |

| Product | Product in offer/job |
|-------------|---|
| ID | Internal identification number |
| Number | Serial number of the product in the offer/job |
| Code | Code |
| Name | Name |
| Description | Description |
| Count | Number of pieces |
| Price | Calculated product price |
| FixedPrice | Fixed product price |
| TotalPrice | Total price of all pieces of the product |
| Weight | Weight |
| TotalWeight | Total weight of all pieces of product |
| Image | Image (Name of file) |

| Product Param | Parameters of the products in the offer/job (for export and print) |
|---------------|--|
| ID | Internal identification number |
| Code | Code |
| Name | Name |
| Value | Value |
| IsInput | Input parameter (Y/N) |
| IsComputed | Computed parameter (Y/N) |
| IsChecking | Checking parameter (Y/N) |

| Part | Parts of products in the offer/job |
|--------------------|---|
| ID | Internal identification number |
| Number | Serial number of the part in the product |
| FullNumber | Comprehensive serial number (including product serial number) |
| Type | Part type: 1 = flat part, 2 = longitudinal part, 3 = other part |
| Code | Code |
| Name | Name |
| Description | Description |
| Price | Price |
| Weight | Weight |
| Count | Number of pieces |
| CountFormula | Formula for calculating the number of pieces |
| Length | Length |
| LengthFormula | Formula for calculating length |
| Width | Width |
| WidthFormula | Formula for width calculation |
| Thickness | Thickness |
| Size | Part size (length x width) |
| CutLength | Cut length of the part (may differ from the final one if there are edging strips or additional machining) |
| CutWidth | Cut width of the part (may differ from the final one if there are edging strips or additional machining) |
| CutSize | Cut part size (length x width) |
| Grain | Part have grain by length (Y/N) |
| GrainDirection | Drawing direction - if the value is entered (X or Y) , the drawing and in the direction of length (Grain) will also be switched on automatically . If there is Y, the part will rotate automatically. You can use this option when importing parts from CAD applications that also distinguish the direction of the drawing (X = along the length, Y = along the width). |
| Image | Image (Name of file) |
| MaterialCode | Material code |
| MaterialName | Material name |
| MaterialThickness | Material thickness |
| MaterialWidth | Material width |
| LayerCount | Number of layers (flat parts) |
| GroupType | Part is merged with another part in the group due to: 1 = grain, 2 = usage |
| GroupNumber | Position (column) in group type 1 / or number in group type 2 |
| GroupPosition | Position (row) in group type 1 |
| GroupPieces | Merge the pieces of the part in group type 1: 0 = in the direction of the grain, 1 = across the grain |
| CornerLengthLT | The length of the chamfer of the upper left corner of the part |
| CornerWidthLT | Width of the chamfer of the upper left corner of the part |
| CornerTypeLT | Top left bevel type: 0 = cutout, 1 = arc cutout, 2 = straight cutout, 3 = arc cutout |
| CornerLengthRT | The length of the chamfer of the upper right corner of the part |
| CornerWidthRT | Width of the chamfer of the upper right corner of the part |
| CornerTypeRT | Top right bevel type: 0 = cutout, 1 = arc cutout, 2 = straight cutout, 3 = arc cutout |
| CornerLengthRB | Length of the chamfer of the lower right corner of the part |
| CornerWidthRB | Width of the lower right corner of the part |
| CornerTypeRB | Bevel type of lower right corner: 0 = cutout, 1 = arc cutout, 2 = straight cutout, 3 = arc cutout |
| CornerLengthLB | Length of chamfer of the lower left corner of the part |
| CornerWidthLB | Width of the lower left corner of the part |
| CornerTypeLB | Lower left corner chamfer type: 0 = cutout, 1 = arc cutout, 2 = straight cutout, 3 = arc cutout |
| EdgeCodeT | Code edging tape on the upper edge |
| EdgeCodeR | Code edging tape on the right edge |
| EdgeCodeB | Code edging tape on the lower edge |
| EdgeCodeL | Code edging tape on the left edge |
| EdgeCodeLT | Border tape code on the upper left cut (if any) |
| EdgeCodeRT | Border tape code on the upper right cut (if any) |
| EdgeCodeRB | Border tape code on the lower right cut (if any) |
| EdgeCodeLB | Border tape code on the lower left cut (if any) |
| EdgeNameT | Name of the edging tape on the top edge |
| EdgeNameR | Name of the edging tape on the right edge |
| EdgeNameB | Name of the edging tape at the bottom edge |
| EdgeNameL | Name of the edging tape on the left edge |
| EdgeNameLT | Name of the edging tape on the upper left cut (if any) |
| EdgeNameRT | Name of the edging tape on the upper right cut (if any) |
| EdgeNameRB | Name of the edging tape on the lower right cut (if any) |
| EdgeNameLB | Name of the edging tape on the lower left cut (if any) |
| EdgeChangeDim | Whether to adjust the dimensions of the cut part by the thickness of the strips and grinding (Y/N) |
| Accessory1Code | Accessory code 1 |
| Accessory1Quantity | Quantity of accessories 1 |
| Accessory2Code | Accessory code 2 |
| Accessory2Quantity | Quantity of accessories 2 |
| CustomData1-10 | 10 custom data |

| PartDetail | Operations and materials in the part (only for export and printing) |
|-------------------|--|
| ID | Internal identification number |
| Type | 1100 = formatinf of the sheet material, 1150 = trimming corners, 1199 = any other surface operation 1200 = forming of bar material 1299 = other dimensional length operation 4000 = edge taping, 4099 = other operation with the edge, 9000 = other "lumpy" operation, 10000 = another operation |
| MaterialName | Material name |
| MaterialNameCount | If the operation consists in 1 Parts and repeated several times (eg. 2 of the hinge assembly), there will be a number of repetitions the Name of material (eg. "2 Hinge XY") or a pure Name of material (eg. "Hinge XY") |
| MaterialCode | Material code |
| MaterialColor | Material color (numerical color value) |
| MaterialWidth | Material width |
| MaterialThickness | Material thickness |
| OperationCode | Operation code |
| OperationName | Operation name |
| OperationCount | Repetition of the operation for 1 piece (eg in the case of edging tape there will be a number of edged edges) |
| OperationQuantity | The amount of operation per 1 piece (eg in the case of edging tape there will be its length) |
| Value | Dimensions (in case of cutting sheet material or trimming corners) or quantity (for other types of operations) |

| Pack | Product package in order (only for export and printing) |
|----------------|--|
| ID | Internal identification number |
| Number | Serial number within the product |
| FullNumber | Comprehensive serial number (including serial number of the product in the order) |
| Type | 1 = Package with flat parts, 2 = Package with longitudinal parts, 3 = Package with other parts, 4 = Package with accessories, 5 = Package with small accessories |
| Weight | Weight |
| PartCount | Number of parts in the package |
| SmallAccessory | Whether it is a package with small accessories (Y/N) |

| PackItem | Product package item in order (for export and printing only) |
|--------------|---|
| ID | Internal identification number |
| IsPart | Whether it is a part (+) or an accessory (-) |
| PartNumber | Serial number (if part) |
| Code | Part or material code (accessory) |
| Name | Name of part or material (accessory) |
| NameSize | Part name and dimension (or Material/Accessory name and part) |
| NameSizeCode | Part name, size and code (or Material/Accessory, Part name and Material code/Accessories) |
| Length | Part length |
| Width | Part width |
| Quantity | Number of pieces |
| Weight | Weight |

| PackAcc | Product package with accessory (for export and printing only) |
|-------------|---|
| Number | Number |
| ProductName | Product name |
| Name | Package name |
| Count | Count |
| Weight | Weight |

| PackAcItem | Item of product package with accessory (for export and printing only) |
|------------|---|
| Name | Name |
| Quantity | Quantity |
| SubItems | List of subitems (for Kits) |

| ProductionBatch | Production batch (only for export and printing) |
|-----------------|--|
| ID | Internal identification number |
| Date | Creation date |
| Number | Number |
| PartCount | Total number of pieces |
| Name | Name |
| ConnectedJobs | Jobs codes from which the parts in this production batch originate |
| Price | Price |
| Weight | Weight |
| Reserved | Reserved material in stock (in%) |
| Issued | Material released from stock (in%) |
| Produced | Production status (in%) |

| | |
|------------------------|---|
| Work | Offer/Job/Production batch summary or cutting plan (for export and printing only) |
| ID | Internal identification number |
| Number | Offer/Job/Production batch number |
| Name | Name of the Offer/Job/production batch |
| Title | Number and Name of the customer |
| CustomerShortName | Abbreviated customer name |
| OperationType | 1100 = forming of the sheet material, 1150 = trimming corners, 1199 = any other surface operation 1200 = forming of bar material 1299 = other dimensional length operation 4000 = edge taping , 4099 = other operation with the edge 9000 = other "lumpy" operation 10000 = another operation |
| OperationName | Name of the operation |
| OperationCode | Operation code |
| OperationDescription | Operation description |
| MeasureUnit | Unit of measure |
| Count | Number of operations |
| Quantity | Amount of operation |
| OperationUnitCost | Cost of 1 operation |
| OperationCost | Total cost of operation |
| OperationUnitPrice | Price of 1 operation |
| OperationPrice | Total cost of the operation |
| MaterialName | Material name |
| MaterialCode | Material code |
| MaterialColor | Material color (numerical value) |
| MaterialThickness | Thickness of material |
| MaterialWidth | Material width |
| MaterialGrain | The material has an oriented grain - in the direction of length (Y/N) |
| MaterialImageIndex | Internal material image number |
| MaterialDescription | Material description |
| Overconsumption | Overconsumption of material - including waste (%) |
| MaterialQuantityGross | Amount of material including waste (gross) |
| MaterialUnitCost | Unit cost of materials |
| MaterialUnitCostGross | Recalculated unit cost of material (for quantity including waste) |
| MaterialCost | Total material costs |
| MaterialUnitPrice | Unit price of material |
| MaterialUnitPriceGross | Recalculated unit price of the material (for quantity including waste) |
| MaterialPrice | Total price of the material |
| AdditionName | Name of supplementary material |
| AdditionCode | Supplementary material code |
| AdditionQuantity | Amount of supplementary material |
| AdditionUnitCost | Unit costs for supplementary material |
| AdditionCost | Total cost of supplementary material |
| AdditionUnitPrice | Unit price of supplementary material |
| AdditionPrice | Total price of additional material |
| Weight | Unit weight |
| TotalWeight | Total weight |
| AvgUnitCost | Average unit costs (per operation including main and ancillary materials) |
| TotalCost | Total costs |
| AvgUnitPrice | Average unit price (per operation including main and supplementary material) |
| TotalPrice | Total price |
| WorkTime | Estimated production time |
| IsPlan | Whether it is an panel/bar cutting plan (Y/N) |

In the case of a cutting plan, the following data is also available:

| | |
|-----------------------|--|
| SheetCount | Total number of boards / material formats used |
| SheetQuantity | Total area or length of material used |
| SheetWeight | Total weight of material used |
| SheetPrice | Total price of material from stock |
| StockSheetCount | Number of used sheets / formats of material from the warehouse |
| StockSheetQuantity | Area or length of material used from the warehouse |
| StockSheetWeight | Weight of used material from warehouse |
| ExtSheetCount | Number of used sheets / formats of material from the customer |
| ExtStockSheetQuantity | Area or length of material used by the customer |
| ExtStockSheetWeight | Weight of material used from the customer |
| PlanPartPrice | Recalculated price for 1 m2 / 1 m of part material in the cutting plan |
| OffcutCount | Total number of usable cuttings created |
| OffcutQuantity | Total area / length of usable offcuts |
| OffcutWeight | Total weight of usable offcuts |
| OffcutPrice | The total price of usable offcuts |
| OffcutReturnToStock | Whether the offcuts are returned to the warehouse (Y/N) |
| StockOffcutCount | Number of usable offcuts from material from the warehouse |
| StockOffcutQuantity | Area / length of usable offcuts from material from warehouse |
| StockOffcutWeight | Weight of usable offcuts from material from warehouse |
| ExtOffcutCount | Number of usable offcuts from material from the customer |
| ExtOffcutQuantity | Area / length of usable offcuts from the customer's material |
| ExtOffcutWeight | Weight of usable offcuts from the customer's material |
| WasteQuantity | Waste area / length |
| WasteWeight | Waste weight |
| WastePrice | Waste price |
| WasteReturnToStock | Is the waste returned to the warehouse (Y/N) |
| CutsCount | Total number of cuts |
| CutsLength | Total length of cuts |

| | |
|-----------------|-----------------------------|
| PriceCutsCount | Price for 1 cut |
| PriceCutsLength | Price for 1 m of cutting |
| PricePartsCount | Price for cutting 1 piece |
| Kerf | Kerf |
| Usage | Achieved material usage (%) |

| | |
|-------------------|---|
| WorkPart | Parts in summary i (only for export and printing) |
| ID | Internal identification number |
| ProductionID | Serial number in the production batch |
| JobNumber | Number of Offer/Job |
| JobDate | Creation date of the Offer/Job |
| JobName | Name of the Offer/Job |
| CustomerShortName | Abbreviated customer name |
| Order | Order |
| ProductCode | Product code |
| ProductName | Product name |
| ProductCount | Number of pieces of the product |
| PartCode | Part code |
| PartName | Part name |
| PartDescription | Part description |
| PartSize | Part size (length x width) |
| PartCount | Number of pieces of the part in the product |
| PartNumber | Serial number of the part |
| TotalPartCount | Total number of pieces (for all pieces of product) |
| OperationCode | Operation code |
| OperationName | Name of the operation |
| OperationCount | Number of operations |
| OperationQuantity | Quantity of operations |
| MaterialName | Material name |
| MaterialCode | Material code |
| MaterialColor | Material color (numerical value) |
| MaterialThickness | Material thickness |
| MaterialWidth | Material width |
| MeasureUnit | Unit of measure |
| Dimensions | Dimensions |
| Weight | Weight |
| TotalCount | Total number of operations (in all pieces of part of all pieces of product) |
| TotalQuantity | Total amount of operation (in all pieces of part of all pieces of product) |

| | |
|-----------------------|--|
| Material | Reserved / issued material of production batch / cutting plan (only for export and printing) |
| ID | Internal identification number |
| Type | Material type 1 = panel material, 2 = bar material, 3 = edging tape, 4 = other material |
| Code | Material code |
| Name | Material name |
| Description | Material description |
| BarCode | Barcode |
| Quantity | Quantity |
| MissingQuantity | Missing quantity (if there is insufficient available stock in the warehouse) |
| Unit | Unit of measure |
| IntegerQuantities | Whether only integer quantities are allowed - e.g. in case of piece items (Y/N) |
| Color | Material color (numerical value) |
| ImageIndex | Internal material image number |
| UnitWeight | Unit weight |
| Supply | Current stock |
| AvailableSupply | Current available stock |
| MinSupply | Minimum stock |
| MaxSupply | Maximum stock |
| StockPrice | Stock price |
| SalePrice | Required sale price |
| SalePriceInclVAT | Required sale price including VAT |
| Rounding | 0-none, 1-fine, 2-standard, 3-strong |
| RateVAT | VAT |
| AbbrVAT | VAT designation (abbreviation) |
| TotalSalePriceExclVAT | Sales price (exc. VAT) |
| TotalSalePriceInclVAT | Sales price (incl. VAT) |
| ProducerShortName | Abbreviated name of the manufacturer |
| ProducerCode | Manufacturer code |
| ProducerItemCode | Material code at the manufacturer |
| Supplier1ShortName | Abbreviated Name of Supplier No.1 |
| Supplier1Code | Supplier code no.1 |
| Supplier1ItemCode | Supplier's material code no.1 |
| Supplier 2 ShortName | Abbreviated Name of Supplier No.2 |
| Supplier 2 Code | Supplier code no.2 |
| Supplier 2 ItemCode | Material code at supplier no.2 |
| Supplier 3 ShortName | Abbreviated Name of Supplier No.3 |
| Supplier 3 Code | Supplier code no.3 |
| Supplier 3 ItemCode | Material code at supplier no.3 |

| | |
|-------------------|--|
| PlanLabel | Cutting plan labels (for export and printing only) |
| Type | 0 = offcut 1-group, 2-group's part, 3-part |
| Number | Serial number |
| NumberSize | "Size" serial number (common for different parts of the same size) |
| Name | Name of the offcut/group/part |
| CuttingLength | Cutting length |
| CuttingWidth | Cutting width |
| CuttingSize | Cutting dimensions (length x width) |
| RotCuttingLength | Cutting length (it is interchanged with the width of the turned part) |
| RotCuttingWidth | Cutting width (in the case of a turned part it is interchanged with the length) |
| RotCuttingSize | Cutting dimensions (length x width) - for a rotated part, the dimensions are interchanged |
| LabelCount | Number of labels |
| SheetsCount | Number of simultaneously cutted identical sheets (formats) |
| SheetNumber | Serial number of the sheet |
| SheetsNumbers | Serial number of the sheet in the form of e.g. 5-6 (if the numbering of each sheet is turned on and we have two identical boards here) |
| Sheet Code | Sheet code (stock format) |
| Sheet Length | Sheet length |
| Sheet Width | Sheet width |
| JobNumber | Offer/Job number |
| JobDate | Creation date of the Offer/Job |
| JobName | Name of the Offer/Job |
| CustomerShortName | Abbreviated customer name |
| Order | Order |
| ProductCode | Product code |
| ProductName | Product name |
| ProductCount | Number of pieces of the product |
| PartNumber | Serial number of the part |
| PartCode | Part code |
| PartName | Part name |
| PartDescription | Part description |
| PartSize | Part dimensions (length x width) |
| PartCount | Number of pieces of the part in the product |
| FinalLength | Final part length (after strapping) |
| FinalWidth | Final width of the part (after strapping) |
| FinalSize | Final dimensions of the part (after strapping) |
| Grain | The part has a grain: 0-unspecified, 1-along the length, 2-along the width |
| ImageIndex | Internal part image number |
| PartCount | Number of pieces in 1 product |
| TotalPartCount | Total number of parts in the cutting plan |
| TotalGroupCount | Total number of groups in the cutting plan |
| TotalOffcutCount | Total number of usable offcuts in the cutting plan |
| TotalCount | Total number of parts/groups/usable offcuts in the cutting plan |
| PartPrice | Part price |
| PartWeight | Part weight |
| Data1 -5 | User data 1-5 |
| Data A -E | User data A-E |
| EdgeT | Upper edging tape code |
| EdgeR | Right edging tape code |
| EdgeB | Lower edging tape code |
| EdgeL | Left edging tape code |
| EdgeName T | Name of the upper edging tape |
| EdgeNameR | Name of the right edging tape |
| EdgeNameB | Name of the lower edging tape |
| EdgeNameL | Name of the left edging tape |
| EdgeColor T | Top edging tape color (numeric value) |
| EdgeColorR | Right edging tape color (numeric value) |
| EdgeColorB | Bottom edging tape color (numeric value) |
| EdgeColorL | Left edging tape color (numeric value) |
| EdgeThick T | Thickness of the upper edging tape |
| EdgeThickR | Thickness of the right edging tape |
| EdgeThickB | Bottom edging tape thickness |
| EdgeThickL | Left edging tape thickness |
| CornEx LT | Whether the part has a chamfer in the upper left corner (Y/N) |
| CornEx RT | Whether the part has a chamfer in the upper right corner (Y/N) |
| CornEx RB | Whether the part has a bevel in the lower right corner (Y/N) |
| CornExLB | Whether the part has a chamfer in the lower left corner (Y/N) |
| EdgeLT | Border tape code on the upper left cut (if any) |
| EdgeRT | Border tape code on the upper right cut (if any) |
| EdgeRB | Border tape code on the lower right cut (if any) |
| EdgeLB | Border tape code on the lower left cut (if any) |
| EdgeNameLT | Name of the edging tape on the upper left cut (if any) |
| EdgeNameRT | Name of the edging tape on the upper right cut (if any) |
| EdgeNameRB | Name of the edging tape on the lower right cut (if any) |
| EdgeNameLB | Name of the edging tape on the lower left cut (if any) |
| Edge Color LT | Border tape color on the upper left cut (if any) |
| Edge Color RT | Border tape color on the upper right cut (if any) |
| Edge Color RB | Border tape color on the lower right cut (if any) |
| Edge Color LB | Border tape color on the lower left cut (if any) |

| | |
|---------------------|--|
| PlanMaterial | Material sheets (formats) in the cutting plan (only for export and printing) |
| Length | Length |
| Width | Width |
| External | Whether it is material from the customer (+) or from the warehouse (-) |
| Count | Number of pieces |
| Code | Code (stock format) |
| Price | Price |
| Weight | Weight |
| Defected | Material has defects (Y/N) |
| StockLocation | Position in stock |
| OtherInfo | Additional information (stock format) |
| Expiration | Expiration date (stock format) |
| Sheets | Serial numbers of individual pieces of the format in the cutting plan |

| | |
|-------------------|--|
| PlanPart | Parts in the cutting plan (only for export and printing) |
| ID | Internal identification number |
| Number | Serial number of the part in the cutting plan |
| PartNumber | Serial number of the part in the offer / order |
| ImageIndex | Internal material image number |
| Code | Code |
| Name | Name |
| Count | Number of pieces in 1 product |
| TotalCount | Total number of pieces |
| CuttingLength | Cut length |
| CuttingWidth | Cut width |
| CuttingSize | Cut dimensions (length x width) |
| FinalLength | Final part length (after strapping) |
| FinalWidth | Final width of the part (after strapping) |
| FinalSize | Final dimensions of the part (after strapping) |
| JobNumber | Offer/Job number |
| JobDate | Creation date of the Offer/Job |
| JobName | Name of the Offer/Job |
| CustomerShortName | Abbreviated customer name |
| Order | Order |
| ProductCode | Product code |
| ProductName | Product name |
| ProductCount | Number of pieces of the product |
| Sheets | The numbers of the boards on which the individual pieces of this part are stored |

| | |
|-----------------------|--|
| PlanPartDetail | Operations and materials in the part in the cutting plan (only for export and printing) |
| ID | Internal identification number |
| MaterialName | Material name |
| MaterialCode | Material code |
| MaterialColor | Material color (numerical color value) |
| MaterialWidth | Material width |
| MaterialThickness | Thickness of material |
| OperationCode | Operation code |
| OperationName | Name of the operation |
| OperationCount | Repetition of the operation for 1 piece (eg in the case of edging tape there will be a number of edged edges) |
| OperationQuantity | The amount of operation per 1 piece (eg in the case of edging tape there will be its length) |
| Value | Dimensions (in case of cutting sheet material or trimming corners) or quantity (for other types of operations) |

| | |
|---------------------|---|
| PlanEdgStrip | Edging strips on parts in the cutting plan (only for export and printing) |
| Code | Code |
| Name | Name |
| Count | Count |
| LengthGross | Length (excl. overconsumption) |
| Overconsumption | Overconsumption |
| Length | Length (incl. overconsumption) |

| | |
|-----------------|---|
| WorkStat | Cutting plan billing (for export and printing only) |
| Description | Description |
| Quantity | Quantity |
| Price | Price |
| Total | Total price |

| | |
|-------------------|--|
| PlanOffcut | Usable offcuts in cutting plan (only for export and print) |
| Number | Offcut number |
| Code | Code |
| External | Whether the offcut comes from the customer 's material (Y/N) |
| Length | Length |
| Width | Width |
| Size | Dimensions (length x width) |
| Count | Number of pieces |
| Sheets | The numbers of the boards from which the individual pieces of this offcut come |

| PlanSheet | Sheets (formats) in the cutting plan (only for export and printing) |
|-----------------|--|
| ID | Internal identification number |
| Number | Serial number |
| Count | Number of simultaneously cutted sheets |
| Length | Length |
| Width | Width |
| Dimensions | Dimensions (length x width) |
| External | Whether the sheet (format) comes from the customer (Y/N) |
| PartsCount | The number of pieces placed on the sheet |
| PartsQuantity | Area / length of parts placed on the sheet |
| Offcut Count | Number of offcuts on the sheet |
| Offcut Quantity | Area / length of cuttings placed on the sheet |
| CutsCount | Number of cuts |
| CutsLength | Cutting length |
| Code | Code (stock format) |
| Defected | Whether the stock sheet is defective (Y/N) |
| StockLocation | Position in stock |
| StockOtherInfo | Other data (stock sheet) |
| Expiration | Expiration (stock sheet) |
| SectionLength | Max. section length |
| Usage | Usage (%) |
| CountQuantity | Count and area / length |
| Info | Sheet dimensions and Material Name |
| Statistics | Textual information on the amount of parts, offcuts, waste and cutting |

| PlanSheetSection | Sections of the current cutting plan sheet (only for export and printing) |
|------------------|--|
| ID | Internal identification number |
| Number | Number |
| LengthStart | The distance from the beginning of the section to the left edge of the sheet |
| LengthEnd | The distance of the end of the section from the left edge of the sheet |

| PlanSheetPart | Parts placed in the current section of the current cutting plan sheet (only for export and printing) |
|-------------------|--|
| ID | Internal identification number |
| Number | Serial number of the part in the cutting plan |
| PartNumber | Serial number of the part in the offer/job |
| ImageIndex | Internal material image number |
| PartCode | Code |
| Name | Name |
| Count | Number of pieces in 1 product |
| CuttingLength | Cut length |
| CuttingWidth | Cut width |
| FinalLength | Final part length (after strapping) |
| FinalWidth | Final width of the part (after strapping) |
| JobNumber | Offer/Job number |
| JobDate | Creation date of the Offer/Job |
| JobName | Name of the Offer/Job |
| CustomerShortName | Abbreviated customer name |
| Order | Order |
| ProductCode | Product code |
| ProductName | Product name |
| ProductCount | Number of pieces of the product |

| PlanSheet PartDetail | Operations and materials in the part located in the current section of the current cutting plan sheet (only for export and printing) |
|----------------------|--|
| ID | Internal identification number |
| MaterialName | Material name |
| MaterialCode | Material code |
| MaterialColor | Material color (numerical color value) |
| MaterialWidth | Material width |
| MaterialThickness | Thickness of material |
| OperationCode | Operation code |
| OperationName | Name of the operation |
| OperationCount | Repetition of the operation for 1 piece (eg in the case of edging tape there will be a number of edged edges) |
| OperationQuantity | The amount of operation per 1 piece (eg in the case of edging tape there will be its length) |
| Value | Dimensions (in case of cutting sheet material or trimming corners) or quantity (for other types of operations) |

| StockItem | Stock items |
|-----------------------|--|
| ID | Internal identification number |
| Type | 1 = panel material , 2 = bar material, 3 = edging tape, 4 = other material/goods, 5 = service, 6 = kit |
| Code | Code |
| Name | Name |
| Description | Description |
| BarCode | Barcode |
| Unit | Unit of measure |
| IntegerQuantities | Integer quantities only (Y/N) |
| Width | Width |
| Thickness | Thickness |
| Grain | The panel material has an oriented grain in the direction of length (Y/N) |
| Color | Color (numeric value) |
| ImageIndex | Internal image number |
| UnitWeight | Unit weight |
| TotalWeight | Total weight of current stock |
| Supply | Current stock |
| InitialSupply | Initial stock (import only) |
| InitialLength | Length of sheet / length material format with initial stock (import only) |
| InitialWidth | Width of sheet / length material format with initial stock (import only) |
| Reserved | Currently booked quantity |
| AvailableSupply | Available inventory (current inventory reduced by reserved) |
| MinSupply | Minimum stock |
| AvgSupply | Average stock |
| MaxSupply | Maximum stock |
| MinLackSupply | Missing quantity to reach minimum stock |
| AvgLackSupply | Missing quantity to reach average stock |
| MaxLackSupply | Missing quantity to reach maximum stock |
| StockPrice | Average stock price |
| TotalStockPrice | Total stock value (at current stock prices) |
| SalePrice | Required ales price |
| SalePriceInclVAT | The requested sales price includes VAT (Y/N) |
| Rounding | Rounding of sale price: 0-none, 1-fine, 2-standard, 3-strong |
| RateVAT | VAT |
| AbbrVAT | VAT designation (abbreviation) |
| TotalSalePriceExclVAT | Sales price (excl. VAT) |
| TotalSalePriceInclVAT | Sales price (incl. VAT) |
| Warning | Warning displayed when selecting a stock item |
| LastStockMovement | Date of the most recent receipt/issue/booking of the stock item |
| Canceled | Stock item is canceled (Y/N) |
| StockGroup | Stock group |
| Specification1 | Specification No.1 |
| Specification2 | Specification No.2 |
| Specification3 | Specification No.3 |
| TextureName | Texture (decor) |
| ProducerShortName | Abbreviated Name of the manufacturer |
| ProducerCode | Manufacturer code |
| ProducerItemCode | Material code at the manufacturer |
| Supplier1ShortName | Abbreviated Name of Supplier No.1 |
| Supplier1Code | Supplier code no.1 |
| Supplier1ItemCode | Supplier's material code no.1 |
| Supplier 2 ShortName | Abbreviated Name of Supplier No.2 |
| Supplier 2 Code | Supplier code no.2 |
| Supplier 2 ItemCode | Material code at supplier no.2 |
| Supplier 3 ShortName | Abbreviated Name of Supplier No.3 |
| Supplier 3 Code | Supplier code no.3 |
| Supplier 3 ItemCode | Material code at supplier no.3 |

| StockSubItem | Stock item of kit |
|---------------------|---------------------------------|
| ID | Internal identification number |
| Quantity | Quantity in 1 kit |
| Consumables | Consumables (Y/N) |
| StockItemType | Type: 4 = Material, 5 = Service |
| StockItemCode | Code |
| StockItemName | Name |
| StockItemUnit | Unit of measure |
| StockItemStockPrice | Stock price |
| StockItemSalePrice | Selling price |
| StockItemUnitWeight | Unit weight |

| Supply | Inventory of stock item |
|-------------------|--|
| ID | Internal identification number |
| Code | Code |
| Length | Sheet length (panel/bar material) |
| Width | Sheet width (panel/bar material) |
| Size | Sheet dimensions (panel/bar material) |
| Use | The sheet can be used in the cutting plan (Y/N) |
| UnitWeight | Unit weight |
| TotalWeight | Total stock weight |
| Location | Position in the warehouse |
| Other | Another figure |
| Expiration | Inventory expiration |
| DescriptionFull | Identification Description (code, dimensions, other data, expiration, position in stock) |
| StockPrice | Stock price |
| TotalStockPrice | Stock value (at current stock price) |
| InitialQuantity | Initial stock |
| InitialStockPrice | Initial stock price |
| Quantity | Current stock |
| AvailableQuantity | Available stock (current stock reduced by reserved amount) |
| LastStockMovement | Date of most recent receipt / issue / reservation of stock |
| StockItemCode | Stock item code |
| StockItemName | Name of the stock item |
| Specification | Specification |

| SupplyMovement | Inventory movements (for export and printing only) |
|----------------|--|
| ID | Internal identification number |
| DateTime | Date and time |
| Date | Date |
| Time | Time |
| Document | The document number |
| Description | Description |
| Quantity | Quantity |
| Received | Amount received |
| Reserved | Reserved quantity |
| Issued | Quantity issued |
| CurrentSupply | Current stock |
| Price | The price |
| StockPrice | Stock price |

| Partner | Business partners |
|----------------------|--|
| ID | Internal identification number |
| Code | Code |
| ShortName | Abbreviated Name |
| Name | Name |
| Address | Address (street, POBOX, ...) |
| PostalCode | Postcode |
| City | City |
| State | State |
| NameAddress | Name and address for delivery address |
| Delivery Name | Name for delivery address |
| Delivery Address | Delivery address (street, POBOX, ...) |
| Delivery PostalCode | Postcode (shipping address) |
| Delivery City | City (shipping address) |
| Delivery State | State (shipping address) |
| Delivery NameAddress | Name and delivery address |
| Person | Contact person |
| Telephone | Telephone number |
| E-mail | E-mail adress |
| Web | Homepage |
| Contacts | Phone number, e-mail address and homepage (each entry on a separate row) |
| ContactsRow | Phone number, email address and homepage (all data in one row) |
| BankAccount | Bank account number |
| CompanyID | Company ID |
| TaxID | Tax ID |
| VatID | VAT ID |
| FullIDs | Company ID, Tax ID and VAT ID (each data in a separate row) |
| FullIDsRow | Company ID, Tax ID and VAT ID (all data in one row) |
| PartnerGroup | Group |
| Specification1 | Specification No.1 |
| Specification2 | Specification No.2 |
| Specification3 | Specification No.3 |
| DaysDue | Number of invoice due dates |
| NoVAT | Documents without VAT (Y/N) |

| | |
|--------------|--|
| DocumentType | Document types (for export and printing only) |
| ID | Internal identification number |
| Names | Type name - plural (eg Invoices, Receipts ...) |
| Name | Type name – singular (eg Invoice, Receipt ...) |
| Customer | Business partner name (eg Customer, Customer, Supplier ...) |
| Date | Name of the date of issue of the document (eg Date of issue, Issued on ...) |
| Date2 | Name of the next date in the document (eg date of delivery of the goods, the offer is valid until ...) |
| Add1 | Name of additional data No. 1 (e.g. Order) |
| Add2 | Name of additional data No. 2 (e.g. Delivery method) |
| Sign1 | Description of the person who issued the document (eg Created, Prepared ...) |
| Sign2 | Description of the person who took over the document (eg Accepted, Approved ...) |
| Footer | One-line text at the bottom of each document (e.g. Thank you for your order) |
| PaymentType | 0 = document is not paid, 1 = payment is our income, 2 = payment is our expense |
| PaymentAdd1 | Name of supplementary data no. 1 for payment (e.g. Constant symbol) |
| PaymentAdd2 | Name of supplementary data no. 2 for payment (e.g. Payment method) |
| Color | Identification color (numerical value) |
| TextTotal | Name of the final amount (eg Amount to be paid, Total price ...) |

| | |
|---------------------|--|
| Document | Document |
| ID | Internal identification number |
| Type | Type name (eg Invoice, Receipt) |
| Number | Number |
| Currency | Currency |
| ExchangeRate | Exchange Rate |
| ConnectedDocument | Linked documents |
| Date1 | Date of creation |
| Date2 | Another date |
| Description | Description |
| Add1 | Additional information No.1 |
| Add2 | Additional information No.2 |
| AccountCode | Internal bank account code |
| Bank | Bank |
| BankAccount | Account number |
| BankAddress | Bank address |
| BankID1 | Additional data No. 1 to the bank account (eg SWIFT) |
| BankID2 | Additional data No. 2 to the bank account (eg SWIFT) |
| VariableSymbol | Variable symbol for payment |
| PaymentAdd1 | Additional information no. 1 for payment |
| PaymentAdd2 | Additional information no. 2 for payment |
| DueDate | Due date |
| Text1 | Text No.1 (before the table with the list of items) |
| Text2 | Text No.2 (after the table with the list of items) |
| CustomerCode | Customer code |
| CustomerShortName | Abbreviated customer name |
| CustomerName | Name of the customer |
| CustomerAddress | Address (street, PO BOX) |
| CustomerPostalCode | Postcode |
| CustomerCity | City |
| CustomerState | State |
| CustomerNameAddress | Name and address of the customer |
| DeliveryName | Name for the delivery address |
| DeliveryAddress | Delivery address (street, PO BOX) |
| DeliveryPostalCode | Postcode |
| DeliveryCity | City |
| DeliveryState | State |
| DeliveryNameAddress | Name / customer name and delivery address of the customer |
| CustomerPerson | Contact person at the customer |
| CustomerTelephone | Customer phone number |
| CustomerEmail | Customer email address |
| CustomerWeb | Customer home page |
| CustomerBankAccount | Customer's bank account number |
| CustomerCompanyID | Customer Company ID |
| CustomerTaxID | Customer Tax ID |
| CustomerVATID | Customer VAT ID |
| MyCompanyID | Our Company ID |
| MyTaxID | Our Tax ID |
| MyVATID | Our VAT ID |
| TotalExclVAT | Total price (excl.VAT) |
| TotalVAT | Total VAT |
| DueAmount | Total amount to be paid |
| PaidExclVAT | Amount paid (excl. VAT) |
| PaidVAT | Paid VAT |
| TextPage | Page (translated into the language of the document) |
| TextAdd1 | Supplementary information No.1 (translated into the language of the document) |
| TextAdd2 | Supplementary information No.2 (translated into the language of the document) |
| TextPaymentAdd1 | Additional information No.1 for payment (translated into the language of the document) |
| TextPaymentAdd2 | Additional information No.1 for payment (translated into the language of the document) |

| | |
|--------------------|--|
| TextBankAccount | Bank account (translated into the language of the document) |
| TextBank | Bank (translated into the language of the document) |
| TextVariableSymbol | Variable symbol (translated into the language of the document) |
| TextCustomer | Customer (translated into the language of the document) |
| TextDate | Date of issue (translated into the language of the document) |
| TextDate2 | Another date (translated into the language of the document) |
| TextDueDate | Due date (translated into the language of the document) |
| TextCode | Code (translated into the language of the document) |
| TextName | Name (translated into the language of the document) |
| TextPriceExclVAT | Price excl. VAT (translated into the language of the document) |
| TextQuantity | Quantity (translated into the language of the document) |
| TextVAT | VAT (translated into the language of the document) |
| TextDiscount | Discount (translated into the language of the document) |
| TextTotalExclVAT | Total excl. VAT (translated into the language of the document) |
| TextSign1 | Prepared (translated into the language of the document) |
| TextSign2 | Taken over (translated into the language of the document) |
| TextSummary | Recapitulation (translated into the language of the document) |
| TextExclVAT | Excluding VAT (translated into the language of the document) |
| TextTotal | Total (translated into the language of the document) |
| TextDueAmount | Amount to be paid / Total price (translated into the language of the document) |
| Footer | Footer (translated into the language of the document) |
| UserName | The name of the user who created the document |
| UserContact | Contact details of the user who created the document |
| Profit | Profit of document |
| RemainAmount | Remaining amount to be paid |
| RemainDays | Remaining number of days until due date |
| ExDiscount | Whether there is at least one item with a discount (Y/N) in the document |
| ExVAT | Whether there is at least one item with VAT in the document (Y/N) |
| ExSurcharge | Whether there is at least one item in the document with a surcharge (Y/N) |
| PrintSummary | Whether to print the VAT summary (Y/N) |
| Specification1 | Specification No.1 |
| Specification2 | Specification No.2 |
| Specification3 | Specification No.3 |
| BrokerShortName | Abbreviated broker name |
| BrokerCode | Broker code |
| PriceList | Price list |
| TotalWeight | Total weight of items in the document |

| | |
|-------------------|--|
| DocumentItemGroup | Groups of items in the document (for export and printing only) |
| ID | Internal identification number |
| Number | Number |
| Name | Name |

| | |
|------------------|---|
| DocumentItem | Item in the document |
| ID | Internal identification number |
| Number | Number |
| Group | Group |
| Type | 0 = item, 1 = item with subitems, 2 = subitem, 3 = last subitem |
| ImageIndex | Internal image number |
| StockItemCode | Stock item code |
| StockItemName | Name of the stock item |
| StockBarCode | Barcode |
| SupplyID | Internal inventory identification number |
| SupplyCode | Inventory code |
| SupplyLength | Length (in case of panel/bar materials) |
| SupplyWidth | Width (in case of panel/bar materials) |
| SupplyOther | Other stock information |
| SupplyExpiration | Inventory expiration date |
| SupplyLocation | Location of stock in the warehouse |
| SupplyUnitWeight | Unit stock weight |
| Code | Code |
| Name | Name |
| Description | Description |
| PriceCurr | Price |
| PriceCurrInclVAT | Price includes VAT (Y/N) |
| RateVAT | VAT |
| AbbrVAT | VAT designation (abbreviation) |
| PriceExclVAT | Price excl. VAT |
| PriceInclVAT | Price incl. VAT |
| Discount | Discount / surcharge (%) |
| DiscPriceExclVAT | Discounted price excl. VAT |
| DiscPriceInclVAT | Discounted price incl. VAT |
| Quantity | Quantity |
| Unit | Unit of measure |
| TotalExclVAT | Total price excl. VAT |
| TotalVAT | The amount of VAT |
| TotalInclVAT | Total price incl. VAT |

| | |
|-----------------|--|
| DocumentSummary | Summary of the document |
| ID | Internal identification number |
| Type | 1 = subtotal for individual VAT rates, 10 = total amount, 11 = advance received, 20 = amount to be paid, 30 = rounding |
| Name | Name <i>(translated into the language of the document)</i> |
| PriceExclVAT | Price excl. VAT |
| VAT | The amount of VAT |
| PriceInclVAT | Price incl. VAT |
| OurPriceExclVAT | Price excl. VAT in our currency |
| OurVAT | The amount of VAT in our currency |
| OurPriceInclVAT | Price incl. VAT in our currency |
| AdvancePayment | Whether it is an advance payment - type 11 (Y/N) |

| | |
|--------------------|---|
| DocumentSettlement | Document payments <i>(for export and printing only)</i> |
| ID | Internal identification number |
| Date | Date |
| DocumentNumber | The document number |
| Description | Description |
| Paid | Amount incl. VAT |

| | |
|--------------|--|
| Documents | Summary of documents (grouped by currencies) <i>(for export and printing only)</i> |
| CurrName | Currency name |
| CurrSymbol | Currency symbol |
| TotalExclVAT | Total price excl. VAT |
| TotalVAT | Total VAT |
| DueAmount | Total amount paid |
| RemainAmount | Total remaining amount to be paid |

| | |
|----------|--|
| CatGroup | Product groups in the catalog (for export and printing only) |
| ID | Internal identification number |
| Name | Name |

| | |
|-------------|---|
| CatProduct | Product in catalog (for export and printing only) |
| ID | Internal identification number |
| Number | Number |
| Code | Code |
| Name | Name |
| Description | Description |
| Price | Price |
| Weight | Weight |
| ImageIndex | Internal image number |

| | |
|-----------------|--|
| CatProductParam | Product's parameters in the catalog (only for export and printing) |
| ID | Internal identification number |
| Code | Code |
| Name | Name |
| Value | Value |
| IsInput | Input parameter (Y/N) |
| IsComputed | Computed parameter (Y/N) |
| IsChecking | Checking parameter (Y/N) |

| | |
|---------------|---|
| CatPart | Parts of the product in the catalog (only for export and printing) |
| ID | Internal identification number |
| Number | Number |
| Type | Part type: 1 = flat part, 2 = longitudinal part, 3 = other part |
| Code | Code |
| Name | Name |
| Description | Description |
| Price | Price |
| Weight | Weight |
| Count | Number of pieces |
| CountFormula | Formula for calculating the number of pieces |
| Length | Length |
| LengthFormula | Formula for calculating length |
| Width | Width |
| WidthFormula | Formula for width calculation |
| Thickness | Thickness |
| Size | Part size (length x width) |
| CutLength | Cut length of the part (may differ from the final one if there are edging strips or additional machining) |
| CutWidth | Cut width of the part (may differ from the final one if there are edging strips or additional machining) |
| CutSize | Cut part size (length x width) |
| PartNull | The part does not have a specified size or number (Y/N) |

| | |
|-------------------|--|
| CatPartDetail | Operations and materials in the product part in the catalog (only for export and printing) |
| ID | Internal identification number |
| MaterialName | Material name |
| MaterialNameCount | If the given operation is repeated more than once in 1 part (eg 2x hinge assembly), there will be a number of repetitions and the Material Name (eg "2x Hinge XY") otherwise only the Material Name itself (eg "Hinge XY") |
| MaterialCode | Material code |
| MaterialColor | Material color (numerical color value) |
| MaterialWidth | Material width |
| MaterialThickness | Thickness of material |
| OperationCode | Operation code |
| OperationName | Name of the operation |
| OperationCount | Repetition of the operation for 1 piece (eg in the case of edging tape there will be a number of edged edges) |
| OperationQuantity | The amount of operation per 1 piece (eg in the case of edging tape there will be its length) |
| Value | Dimensions (in case of cutting sheet material or trimming corners) or quantity (for other types of operations) |

| Payment | Payments |
|-------------------------|---|
| ID | Internal identification number |
| AccountCode | Bank account or cash code |
| Prescription | This is a payment prescription only (Y/N) |
| Type | Payment type: -1 = expense, 1 = income |
| Taxable | Payment is taxable (Y/N) |
| VirtualPayment | Payment is only virtual (eg exchange rate difference) |
| Date | Date |
| DocumentNumber | The number of the linked document |
| Description | Description |
| Currency | Currency |
| ExchangeRate | Exchange rate |
| CustomerCode | Business partner code |
| CustomerShortName | Abbreviated customer name |
| CurrencySum | Amount in foreign currency |
| SumExclVAT | Amount excl. VAT |
| SumVAT | The amount of VAT |
| SumInclVAT | Amount incl. VAT |
| IncomeExclVAT | Income excl. VAT |
| IncomeVAT | Income VAT |
| TaxableIncomeExclVAT | Income excl. VAT (taxable payment) |
| TaxableIncomeVAT | Income VAT (taxable payment) |
| TaxableIncomeInclVAT | Income incl. VAT (taxable payment) |
| NoTaxableIncomeExclVAT | Income excl. VAT (non-taxable payment) |
| No TaxableIncomeVAT | Income VAT (non-taxable payment) |
| No TaxableIncomeInclVAT | Income incl. VAT (non-taxable payment) |
| Expense ExclVAT | Expenditure excl. VAT |
| Expense VAT | Expenditure VAT |
| Taxable Expense ExclVAT | Expenditure excl. VAT (taxable payment) |
| Taxable Expense VAT | Expenditure VAT (taxable payment) |
| Taxable Expense InclVAT | Expenditure incl. VAT (taxable payment) |
| NoTaxableExpenseExclVAT | Expenditure excl. VAT (non-taxable payment) |
| No Taxable Expense VAT | Expenditure VAT (non-taxable payment) |
| NoTaxableExpenseInclVAT | Expenditure incl. VAT (non-taxable payment) |
| PaidDocumentNumber | The number of the document paid for by this payment |
| Specification1 | Specification No.1 |
| Specification2 | Specification No.2 |
| Specification3 | Specification No.3 |

| Payments | Summary of payments (grouped by bank account/cash) (for export and print) |
|----------------|---|
| ID | Internal identification number of bank account/cash |
| AccountCode | Bank account/cash code |
| AccountName | Bank account/cash name |
| InitialBalance | Initial balance |
| Incomes | Incomes |
| Expenses | Expenses |
| ClosingBalance | Closing balance |

| MyCompany | Information about your company (for export and print) |
|----------------|---|
| Name | Name |
| Address | Address (street, POBOX, ...) |
| PostalCode | Postcode |
| City | City |
| State | State |
| NameAddress | Name and address for delivery address (data in separate rows) |
| NameAddressRow | Name and address for delivery address (data in one row) |
| CompanyID | Company ID |
| TaxID | Tax ID |
| VatID | VAT ID |
| Full CompanyID | Company ID (including abbreviation) |
| Full TaxID | Tax ID (including abbreviation) |
| Full VatID | VAT ID (including abbreviation) |
| FullIDs | Company ID, Tax ID and VAT ID including abbreviations (data in separate rows) |
| FullIDsRow | Company ID, Tax ID and VAT ID including abbreviations (data in one row) |
| Telephone | Telephone number |
| E-mail | E-mail address |
| Web page | Homepage |
| Contacts | Phone number, e-mail address and homepage (each entry on a separate rows) |
| ContactsRow | Phone number, email address and homepage (all data in one row) |
| OtherData | Other data |